



Beam Reach
Marine Science and Sustainability School

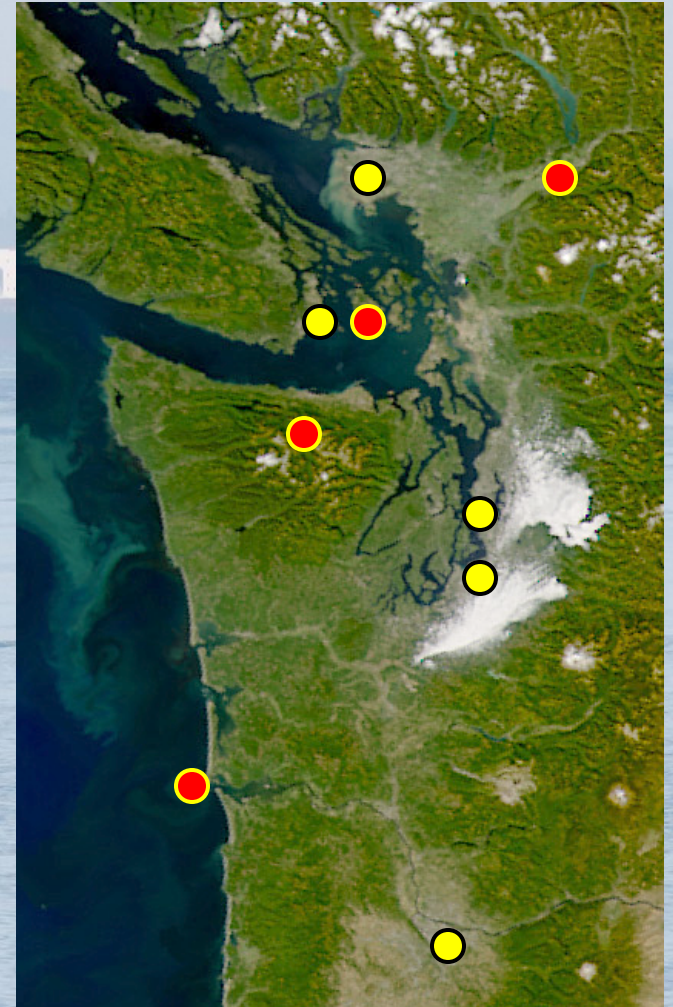


beamreach.org

info@beamreach.org | (206) 251-5554

Beam Reach vision & plan

- Extend marine resources to inter/national advanced undergrads and post-baccs
- Independent non-profit based in Seattle focused on **environmental problems** and solutions
- 10 week study away program rooted in the Pacific Northwest
- Administered and approved for credit through UW Educational Outreach and Oceanography



The goal

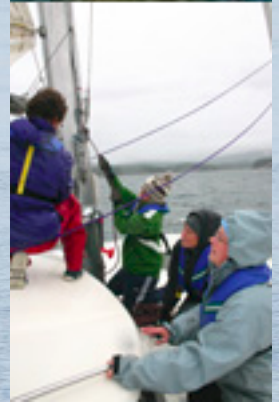
Prepare students to solve critical marine environmental problems through:

- meaningful scientific research
- experience with sustainable technologies, and
- intense collaboration with mentors and peers.

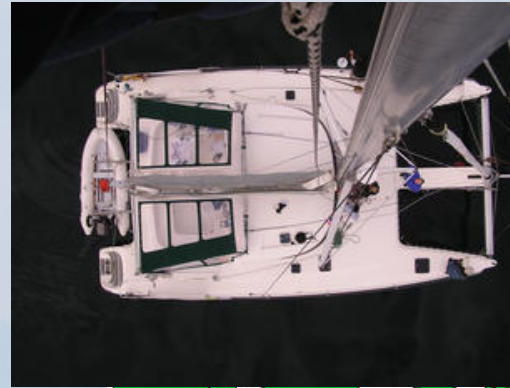


Beam Reach history

- 2003: Non-profit founded
- 2004: Curriculum approved for credit
- Only Northwest U.S., sailboat-based program for under/graduates
- 2005: First program in fall
- 2009: 32 students to date



Curriculum



Five major outcomes

- Rigorous research (from curiosity to paper)
- Explore local marine ecosystem
- Experience sustainable practices
- Learn to sail
- Effectively collaborate with a mentor

Schedule

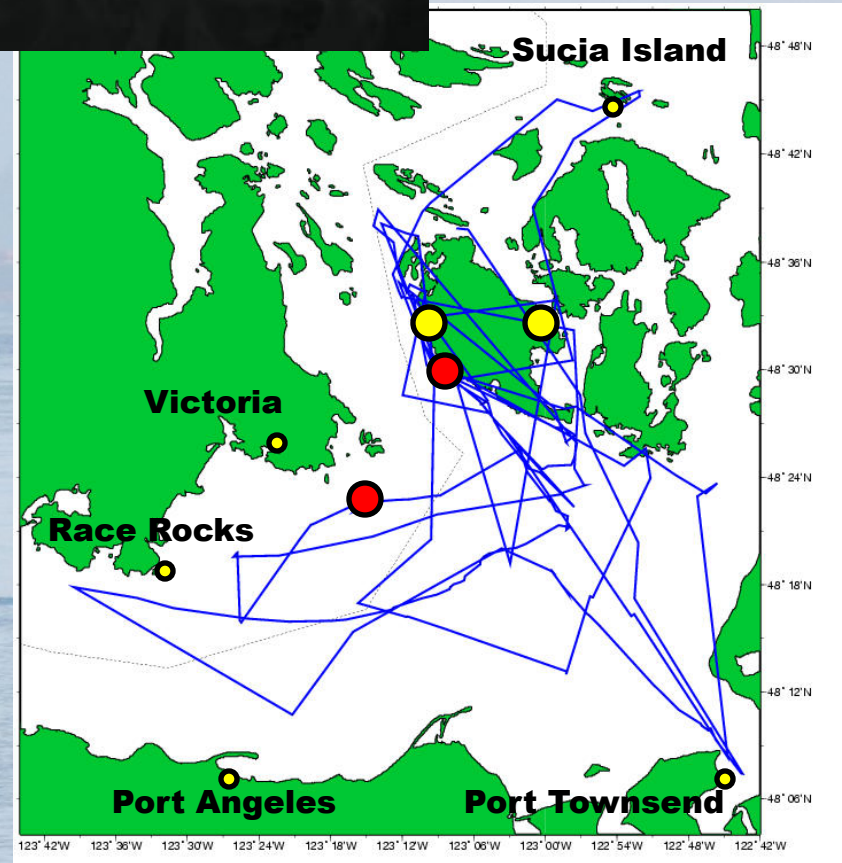
- About ½ time at Friday Harbor Labs
- Other ½ on a 42' sailing catamaran (hybrid!)

Courses (18 quarter credits)

- Marine field research (10)
- Practicing sustainability science (8)
- UW transcript with Ocean 360/365

Implementation:

- Research theme: orcas and acoustics
- 5-12 students, 2 instructors, 1 captain



Facilities

Highlights

Beam Reach: land/sea components

Land: Friday Harbor Labs

classrooms + dock

labs on dock and computer rooms

field trips

open stockroom

rowing, sea kayaking, dingy sailing

cafeteria and Friday Harbor

Sea: Gato Verde 42' catamaran

provisioned weekly at FHL

anchored or moored locally

passive/active acoustic equipment

double berths, group meals



Web page: <http://beamreach.org>

what will it be like?

- > multimedia gallery

what will you study?

- > endangered killer whales
- > bioacoustics

who will you meet?

- > instructors & staff
- > experts
- > other students

how will you learn?

- > curriculum
- > your research project
- > a group service project

where will you live?

- > San Juan Islands
- > Friday Harbor Labs
- > on a sailboat

can you do it?

- > planning & prerequisites
- > dates, credits, and costs

apply!

- > application



BEAM REACH

Marine Science &
Sustainability School

marine field research

conservation & sustainability

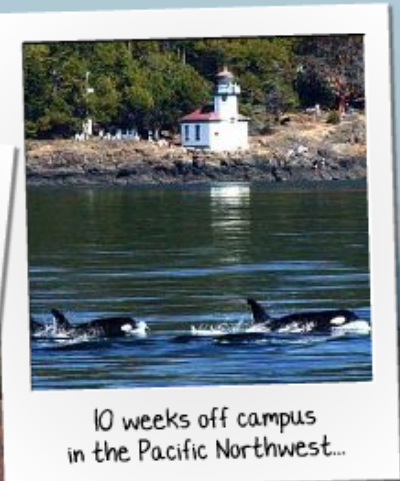
adventure



researching endangered
killer whales...



sailing...



10 weeks off campus
in the Pacific Northwest...

...is Beam Reach for you?

fall & spring programs

newsletter sign-up

contact us

donate

alumni

blog

The background of the slide is a scenic coastal photograph. At the top, a white bird is in flight against a clear blue sky. Below it, a range of blue mountains stretches across the horizon. In the middle ground, a white ship with a red funnel is visible on the water. In the foreground, two orcas are breaching the surface of the blue water. The overall scene is bright and clear, suggesting a sunny day.

Benefits and value

- Unique educational benefits
 - 3-6:1 student:teacher ratio, intensive curriculum
 - Explore Northwest marine ecosystems and resources
 - Learn to live aboard and sail a “sustainability ship”
 - Practice sustainability science: research + service projects
- Value for you
 - Accurate view of what marine field work is like
 - Realistic sampling of science and graduate school
 - References and experience for future applications
 - Development of good mentor/advisor habits

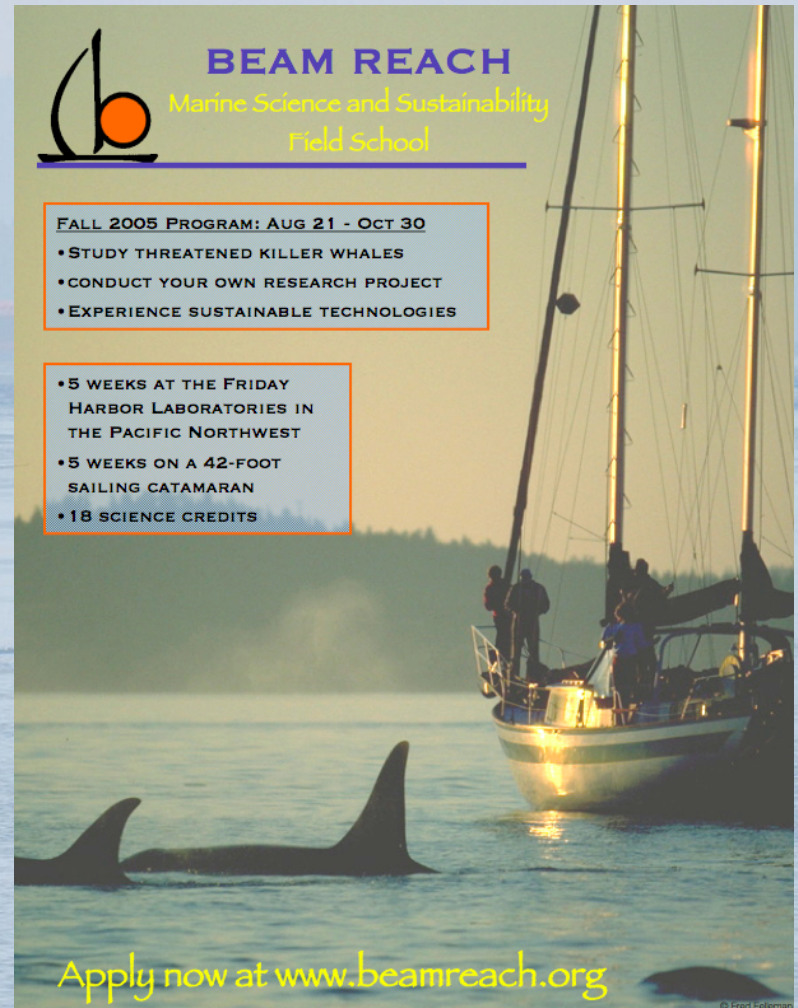
Upcoming Beam Reach programs

Spring and/or fall terms
Acoustic exploration of endangered orcas
and the fish they eat

Learn more and apply at:
<http://beamreach.org/apply.html>

Admissions process
rolling (monthly), need-blind
advanced undergrads and postbaccs
essay, 2 letters, transcripts

Financial aid
most students apply
average aid lowers total cost by 20%

The poster features a background image of a sailboat on the water with orca fins visible in the foreground. The text is overlaid on this image. At the top left is a logo consisting of a stylized sail and a circle. To the right of the logo is the text 'BEAM REACH Marine Science and Sustainability Field School'. Below this, there are two boxes containing program details. The first box is titled 'FALL 2005 PROGRAM: AUG 21 - OCT 30' and lists three bullet points: 'STUDY THREATENED KILLER WHALES', 'CONDUCT YOUR OWN RESEARCH PROJECT', and 'EXPERIENCE SUSTAINABLE TECHNOLOGIES'. The second box lists three bullet points: '5 WEEKS AT THE FRIDAY HARBOR LABORATORIES IN THE PACIFIC NORTHWEST', '5 WEEKS ON A 42-FOOT SAILING CATAMARAN', and '18 SCIENCE CREDITS'. At the bottom of the poster, it says 'Apply now at www.beamreach.org'.

BEAM REACH
Marine Science and Sustainability
Field School

FALL 2005 PROGRAM: AUG 21 - OCT 30

- STUDY THREATENED KILLER WHALES
- CONDUCT YOUR OWN RESEARCH PROJECT
- EXPERIENCE SUSTAINABLE TECHNOLOGIES

• 5 WEEKS AT THE FRIDAY HARBOR LABORATORIES IN THE PACIFIC NORTHWEST

• 5 WEEKS ON A 42-FOOT SAILING CATAMARAN

• 18 SCIENCE CREDITS

Apply now at www.beamreach.org

© Fred Folmer