

The San Juan County Marine Stewardship Area

The Marine Stewardship Area is designed to protect the unique and valuable marine resources of the islands while allowing sustainable use of marine resources to continue forever.

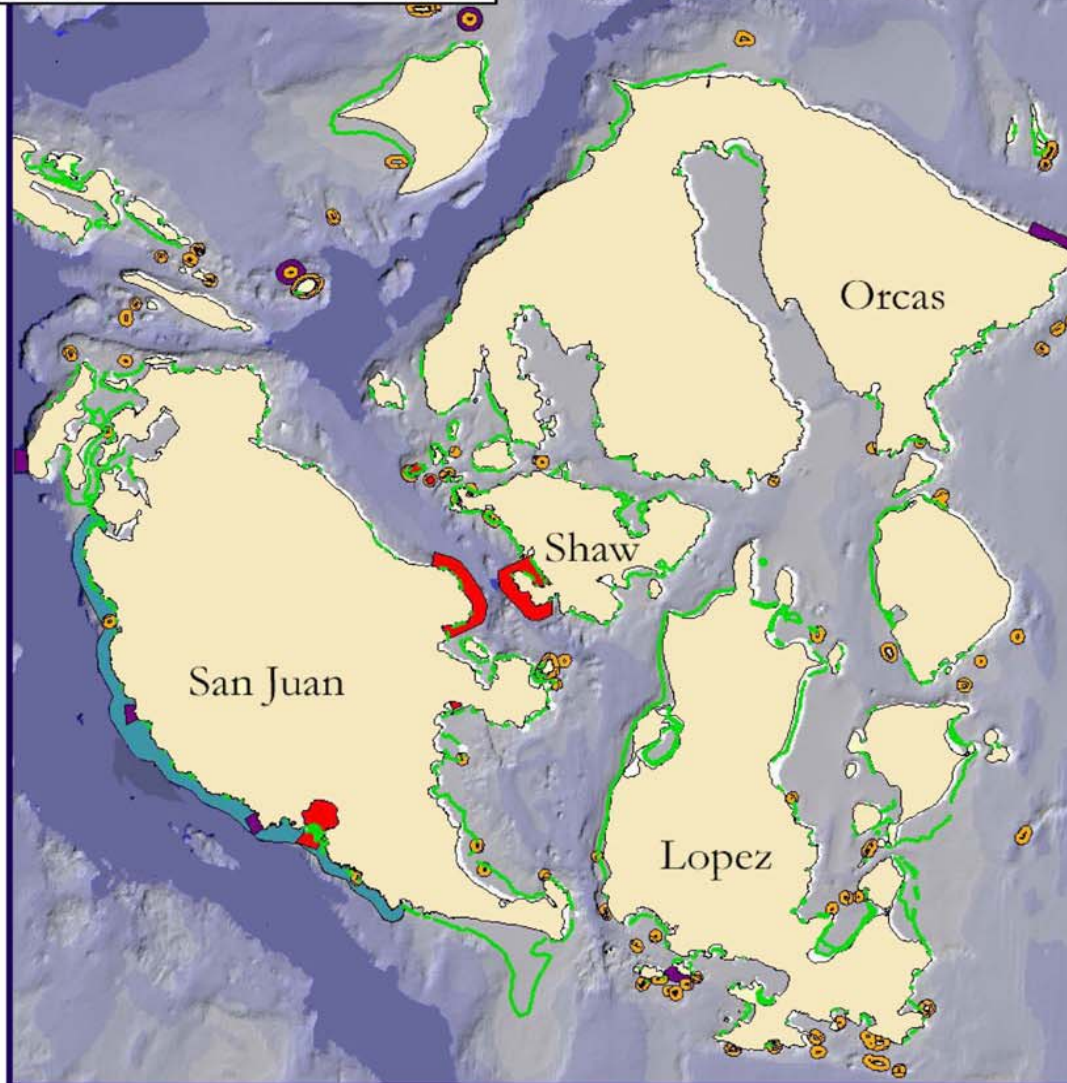
Without establishing any new regulations, the Marine Stewardship Area highlights the numerous protections, both voluntary and regulatory, that exist to protect and restore the San Juan County marine ecosystem.

Further development of the Stewardship Area is happening through a public process; please look for opportunities to participate. Your opinions on stewardship matter.

Marine Biological Reserves Regulation: closed to all shellfish and bottomfish activities (except crabbing in Parks Bay). See marine area 7 rules for exact locations.

National Wildlife Refuges Regulation: 83 locations are closed to the public. Boaters are advised to stay 200 yards away to avoid disturbing marine mammals and birds.

- Marine Biological Reserve
- National Wildlife Refuge
- Bottomfish Recovery Zone
- Whalewatch Exclusion Zone
- Sensitive Eelgrass Area



Bottomfish Recovery Zones Guideline: no bottom fishing within 1/4 mile offshore to protect and restore regional fishing; 8 locations.

Whalewatch Exclusion Zones Guideline: remain 1/4 mile offshore (1/2 mile in Lime Kiln area) when whales are present. **Regulation:** Be Whale Wise! Do not disturb any marine mammals anywhere.

Sensitive Eelgrass Areas Eelgrass provides critical habitat for juvenile fish. Please avoid disturbing sediments and vegetation in less than 30' of water.

For more information about the Stewardship Area, including more detailed maps of sensitive areas throughout county waters, visit the MRC's website:

www.sjcmrc.org

Produced by the San Juan County Marine Resources Committee; funded by a grant from the Northwest Straits Commission.

Maps/ Jim Slocomb