



**LOWRANCE**

Seize the Day

**2008**

Product Catalog

<b>New for 2008</b>	<b>4-5</b>
<b>Sonar/GPS Chartplotters</b>	<b>6-9</b>
<b>Sonar</b>	<b>10-13</b>
<b>GPS Chartplotters</b>	<b>14-17</b>
<b>Marine VHF Radios</b>	<b>18-19</b>
<b>Radar</b>	<b>20-21</b>
<b>Portable Navigation</b>	<b>22-25</b>
<b>Cartography</b>	<b>26-27</b>
<b>Marine Networking</b>	<b>28-29</b>
<b>Digitals/Transducers</b>	<b>30-31</b>
<b>Specifications</b>	<b>32-37</b>
<b>Company</b>	<b>38-39</b>

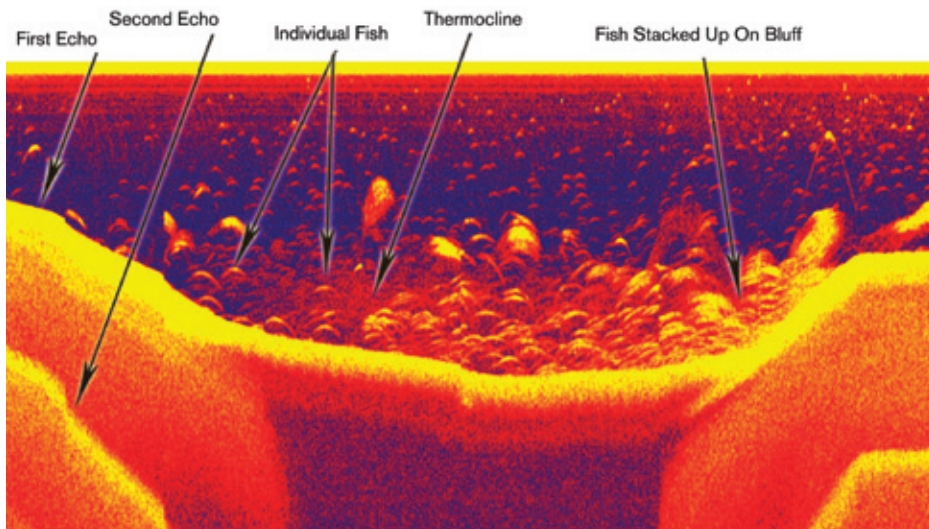


# LOWRANCE®



# New for 2008

**LOWRANCE**



**Lowrance Broadband Sounder-1**



**Navico Expansion Port-1**

## High-Speed Ethernetworks

Presenting next-generation, super-sonar performance via lightning-fast, onboard networking with plug-and-play modules for your on-the-water pleasure. Featuring the new **Lowrance Broadband Sounder-1** module in the next level of Lowrance technologies of sonar soundings with the most striking underwater detail, peerless echo clarity and remarkable depth capability! Plus, the new **Navico Expansion Port-1** for multi-station broadcast of sonar graphing to any compatible Lowrance display on the network. Details page 28.



**LVR-250**



**LVR-880**



**LHR-20**



**LHR-22**

## Answering the VHF Call

A host of all-new Lowrance fixed-mount and handheld marine VHF radios, sporting magnificent choices and enhanced features with surprising affordability. Details page 18.





## New Big Plus in One-for-All GPS Navigation

Let XOG™ take you in a whole new direction for precision and weatherproof navigation on the road, on the water and on the trail. Built-in turn-by-turn automotive voice navigation and point-to-point outdoor guidance, backed by the largest selection of outdoor/marine mapping options available anywhere. Details page 22.

## Bigger Turn-On in Off-Road GPS

The No. 1 name in precise off-highway, extreme GPS navigation durability and detail hits the big time. The new GlobalMap® Baja 840C features a new, larger 8.4" display for big-color viewing with detailed plug-and-play mapping options in a larger, right-sized package to fit most applications. Details page 16.



## Cool New IceMachine™

Exceptional sonar/GPS chartplotter ice-fishing portability, with on-the-boat functional accessories, make the new LMS-522C IceMachine™ an all-season angler's dream-come-true. A complete package with multi-performance versatility – and a host of high-detail mapping options – helps you find fish 12 months a year! Details page 13.



# LCX Advanced Sonar/GPS Chartplotters

**LOWRANCE**

Powerful fishfinding. Precision navigation. Incredible networking versatility and expandability. And so easy on the eyes. A total performance package, Lowrance LCX series is the sharpest hook in the marine electronics tackle of serious inland and coastal anglers. And the top choice of tournament champions.

## Shared Features

**30GB Hard Drive (HD models)** Preloaded high-detail electronic cartography with inland and coastal coverage — U.S. Enhanced Lake Maps and Lowrance Fishing Hot Spots® PRO with depth contours; Lowrance NauticPath™ coastal/Great Lakes electronic charting; Lowrance MapCreate™ USA Series-7.

**SolarMAX™ Displays.** Innovative technology for superior wide-angle and bright-sunlight viewing.

**Ethernetworks.** High-speed, high-capacity plug-and-play networking of displays with performance modules like Broadband Sounder-1.

**Lowrance Radar Compatible.** Radar overlay and other advanced performance features with many affordable radar choices.

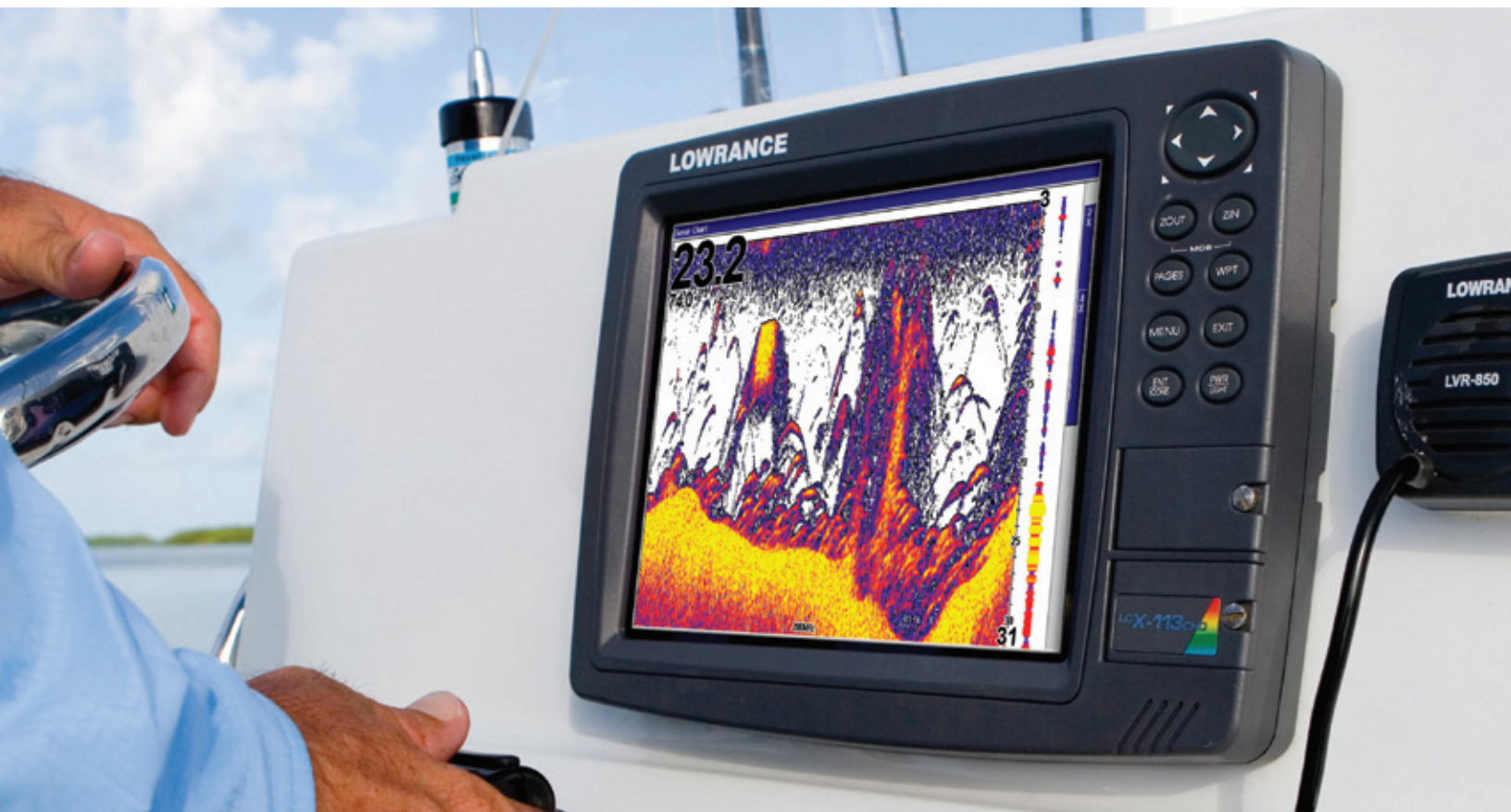
**NMEA 2000®.** Connectivity with NMEA 2000® data-sharing networks and sensors.

**NMEA 0183.** Dual RS-232 ports for radar, autopilot, DSC VHF and more.

## Highlights

- Up to 1kW RMS sounding (8,000W peak-to-peak); depths to 3,000' (915 m) @ 50 kHz
- Super-sensitive receiver enhances shallow/deep water sonar performance
- 200 kHz or 50/200 kHz operation
- GPS+WAAS precision with NMEA 2000®-certified LGC-3000 external antenna
- Waterproof slots to load optional cartography on plug-and-play SD cards for display: Lowrance FreedomMaps™, Lowrance Fishing Hot Spots® PRO, Lowrance LakeMaster® ProMaps, Lowrance NauticPath™ USA Coastal & International, and select Navionics® electronic charts

See *Product Comparisons* - page 32.



## LCX-113c HD 10.4"

A brilliant performer in a large-format display for serious inland and coastal fishing success with 30GB hard drive.

## LCX-112c

Same as the LCX-113c HD without the built-in hard drive. Expanded detail of the built-in background map includes over 3,000 U.S. lakes with high-resolution borders and depth contours.

**10.4"/26.4 cm diag. 16-bit color TFT SolarMAX™**  
**Fluorescent cold cathode screen-keypad backlighting**  
**600V x 800H pixel SVGA resolution**  
**Case WxHxD: 12.2 x 9.1 x 3.7 in. / 31 x 23.1 x 9.4 cm**



## LCX-38c HD 8.4"

Industry award-winning design for peerless performance in a right-sized, right-priced choice with 30GB hard drive.

## LCX-37c

Same as the LCX-38c HD without the built-in hard drive. Expanded detail of the built-in background map includes over 3,000 U.S. lakes with high-resolution borders and depth contours.

**8.4"/21.3 cm diag. 16-bit color TFT SolarMAX™**  
**Fluorescent cold cathode screen-keypad backlighting**  
**600V x 800H pixel SVGA resolution**  
**Case WxHxD: 10.6 x 7.8 x 3.7 in. / 26.9 x 19.8 x 9.4 cm**

*Shown with optional Navionics® HotMaps Platinum cartography.*



## LCX-28c HD 7"

One of the most popular performance package choices in a 7" display with 30GB hard drive.

## LCX-27c

Same as the LCX-28c HD without the built-in hard drive. Expanded detail of the built-in background map includes over 3,000 U.S. lakes with high-resolution borders and depth contours.

**7"/17.8 cm diag. 16-bit color TFT SolarMAX™**  
**Fluorescent cold cathode screen-keypad backlighting**  
**480V x 640H pixel full VGA resolution**  
**Case WxHxD: 9.3 x 6.8 x 3.7 in. / 23.6 x 17.3 x 9.4 cm**



Configurations	LCX-113c HD	LCX-112c	LCX-38c HD	LCX-37c	LCX-28c HD	LCX-27c
With 50/200 kHz Skimmer® transom-mount transducer/LGC-3000 GPS antenna/temp-speed-distance readings	117-97	117-931	123-52	123-461	123-18	123-131
With 200 kHz Skimmer® transom-mount transducer/LGC-3000 GPS antenna/temp readings	117-96	117-921	123-51	123-451	123-17	123-121
Without LGC-3000 and transducer	117-99	117-951	123-53	123-471	123-19	123-141

Actual depth capabilities depend on transducer configuration and installation, bottom composition and water conditions. All sonar units typically read deeper in fresh water than salt water. Compatible with thru-hull and shoot-thru-hull transducers sold separately.

# LMS Recording Sonar/GPS Chartplotter Dynamos

**LOWRANCE**

Lowrance LMS sonar/chartplotters are undeniably the hands-down choice of discerning anglers for marking fish and finding their way. No wonder. No other can offer its unique color display for picture-perfect viewing. And no other packs so much precision, reliability and potent performance into one compactly powerful package than Lowrance.

## Shared Features

**Exclusive Displays.** Proprietary 5" display with 480x480 perfectly-square pixels for the truest sonar graph and navigation detail.

**SolarMAX™.** Innovative screen technology for superior wide-angle and bright-sunlight viewing.

**Superb Background Map.** Enhanced built-in mapping including over 3,000 U.S. lakes with high-resolution borders with depth contours.

**Ethernetworks.** High-speed, high-capacity plug-and-play networking of displays with performance modules like Broadband Sounder-1.

**Lowrance Radar Compatible.** Radar overlay and other advanced performance features with many affordable radar choices.

**NMEA 2000®.** Connectivity with NMEA 2000® data-sharing networks and sensors.

**NMEA 0183.** Single RS-232 port for radar, autopilot, DSC VHF and more.

## Highlights

- Single- and dual-frequency (DF) choices:
  - 200 kHz – 300W RMS (2,400W peak-to-peak); depths to 900' (274 m)
  - 50/200 kHz – 500W RMS sounding (4,000W peak-to-peak); depths to 2,500' (762 m) @ 50 kHz
- Super-sensitive receiver enhances shallow/deep water sonar performance
- GPS+WAAS precision with NMEA 2000®-certified LGC-3000 external antenna (except iGPS models)
- Waterproof slot to load optional high-detail cartography on plug-and-play SD cards for display: Lowrance FreedomMaps™, Lowrance Fishing Hot Spots® PRO, Lowrance LakeMaster® ProMaps, Lowrance NauticPath™ USA Coastal & International, and select Navionics® electronic charts

See *Product Comparisons* - page 33.





## LMS-520c 5"

This splendid full-size color 200 kHz sonar/GPS chartplotter comes fully loaded with pro-preferred features. Skimmer® transom-mount transducer with built-in temp sensor. External LGC-3000 GPS+WAAS antenna.

#123-35

#123-40 without transducer

#123-41 without LGC-3000 and transducer

## LMS-522c iGPS

Same as the LMS-520C with built-in GPS+WAAS antenna. Perfect for vertical console mount on open-cockpit boats.

#116-27

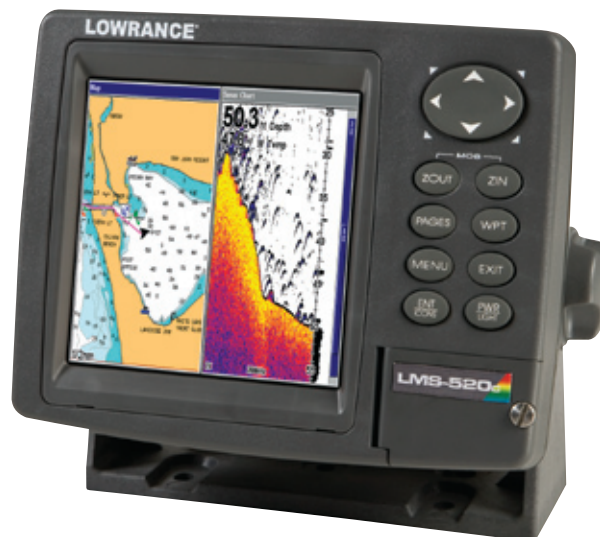
#116-30 without transducer

480 x 480 pixel resolution

5"/12.7 cm diag. 16-bit color TFT SolarMAX™

Fluorescent cold cathode screen-keypad backlighting

Case WxHxD: 6.9 x 5.4 x 3.4 in. / 17.6 x 13.8 x 8.6 cm



## LMS-525c DF 5"

A powerful color sonar/GPS chartplotter designed for deeper salt water or downrigger tracking. Skimmer® transom-mount 50/200 kHz transducer with built-in temp sensor. External LGC-3000 GPS+WAAS antenna plus speed/distance sensor.

#123-36

## LMS-527c DF iGPS

Same as the LMS-525C DF with built-in GPS+WAAS antenna. Perfect for vertical console mount on open-cockpit boats.

#116-28

480 x 480 pixel resolution

5"/12.7 cm diag. 16-bit color TFT SolarMAX™

Fluorescent cold cathode screen-keypad backlighting

Case WxHxD: 6.9 x 5.4 x 3.4 in. / 17.6 x 13.8 x 8.6 cm



## M68c s/MAP 3.5"

A favorite for smaller boats and budgets, with precision Lowrance fishfinding and navigation performance – and sunlight-readable color display – packed in a compact case at a price to match.

- 200 kHz Skimmer® transom-mount transducer with built-in temp sensor
- 800W peak-to-peak / 100W RMS; depths to 600' / 183 m
- Super-sensitive Lowrance receiver for excellent shallow/deep water performance
- GPS+WAAS precision with built-in antenna
- Built-in Lowrance cartography with enhanced detail of lakes, coastal waters wth nav aids, plus major highways/cities

#116-03

#116-05 without transducer

## M68c s/MAP Salt Water

Features a special Skimmer® deep water transducer with temp sensor for deeper salt water or downrigger tracking to depths of 800' / 244 m.

#116-07

3.5"/8.9 cm diag. 256-color TFT

White LED screen-keypad backlighting

320V x 240H pixel resolution

Case WxHxD: 4.3 x 5.8 x 2.5 in. / 10.8 x 14.7 x 6.4 cm



Actual depth capabilities depend on transducer configuration and installation, bottom composition and water conditions. All sonar units typically read deeper in fresh water than salt water.

# X-Series Fullsize 5" Sonar

**LOWRANCE**

Legendary. Unequaled. Uncompromising. Lowrance X-series. The first name in sportfishing sonar is still absolutely the first choice of serious anglers – from salty pros on the tournament trail to dedicated recreational fishermen and fisherwomen who know you just can't lose with Lowrance.

## High Color For The Highly Competitive

Exceptional Lowrance fishfinding innovation, proprietary and picture-perfect color viewing, plus networking performance expansion versatility make the X500-series trophy catches for inland and coastal anglers alike.

**Exclusive Displays.** Proprietary 5" display with 480x480 perfectly-square pixels for the truest sonar graph detail.

**SolarMAX™.** Innovative screen technology for superior wide-angle and bright-sunlight viewing.

**Ethernetworks.** High-speed, high-capacity plug-and-play networking of displays with performance modules like Broadband Sounder-1.

**Lowrance Radar Compatible.** Advanced performance features with many affordable radar choices.

**NMEA 2000®.** Connectivity with NMEA 2000® data-sharing networks and sensors.

See *Product Comparisons* - page 34.



## X510c 200kHz Sonar

- Skimmer® transom-mount transducer with built-in temp sensor with up to 60° fish detection coverage
- 2,400W peak-to-peak / 300W RMS; depths to 900' / 274 m
- Super-sensitive receiver enhances shallow/deep water sonar performance
- Adjustable Ping Speed with automatic HyperScroll™ for high-speed sounding
- COLORLINE™ enhances target separation and helps define bottom composition

**#123-33**

**#123-391** without transducer

## X515c DF 50/200kHz Sonar

The coastal/Great Lakes color sonar version of the X510c, designed for deeper salt water or downrigger tracking.

- Skimmer® transom-mount 50/200 kHz transducer with built-in temp sensor
- 500W RMS / 4,000W peak-to-peak; depths to 2,500' / 762 m @ 50 kHz
- Speed/distance sensor

**#123-34**

**480 x 480 pixel resolution**

**5"/12.7 cm diag. 16-bit color TFT SolarMAX™**

**Fluorescent cold cathode screen-keypad backlighting**

**Case WxHxD: 6.9 x 5.4 x 3.4 in. / 17.6 x 13.8 x 8.6 cm**

## Monochrome Marvels

From power, to pixels, to price, Lowrance offers unparalleled and unequalled performance choices for dedicated anglers with a marked preference for monochrome displays to mark fish.

### Shared Features

- Skimmer® transom-mount transducer with built-in temp sensor
- Enhanced receiver design for superior shallow/deep water performance
- FishReveal™ feature exposes targets hidden in cover and clutter
- Adjustable Ping Speed with automatic HyperScroll™ for high-speed sounding
- GRAYLINE® enhances target separation and helps define bottom composition

### X135

The most powerful and popular high-resolution Lowrance monochrome fishfinder in a class all by itself. Plug-and-play connectivity with all NMEA 2000® networks and sensors.

- 200 kHz Skimmer® transducer with temp sensor and up to 60° fish detection coverage
- 4,000W peak-to-peak / 500W RMS; depths to 1,000' / 305 m

#117-01

#117-13 without transducer

### X136 DF

The coastal/Great Lakes model of the X135 for deeper salt water or downrigger tracking.

- Dual-frequency Skimmer® 50/200 kHz transducer with built-in temp sensor
- 500W RMS / 4,000W peak-to-peak; depths to 2,500' / 762 m @ 50 kHz
- Speed/distance sensor

#117-02

5"/12.7 cm diag. Film SuperTwist 16-level gray scale

White LED screen-keypad backlighting

480 x 480 pixel resolution

Case WxHxD: 6.9 x 5.4 x 3.4 in. / 17.6 x 13.8 x 8.6 cm

### X125

Uncompromising Lowrance fish-finder features and performance in a tour-grade model at a great price. Not for NMEA 2000® networking.

- 200 kHz Skimmer® transducer with temp sensor and up to 60° fish detection coverage
- 2,400W peak-to-peak / 300W RMS; depths to 900' / 274 m

#117-07

### X126 DF

The coastal/Great Lakes model of the X125 for deeper salt water or downrigger tracking.

- Dual-frequency Skimmer® 50/200 kHz transducer with built-in temp sensor
- 500W RMS / 4,000W peak-to-peak; depths to 1,700' / 518 m @ 50 kHz
- Speed/distance sensor

#117-08

5"/12.7 cm diag. Film SuperTwist 16-level gray scale

Amber LED screen-keypad backlighting

480 x 480 pixel resolution

Case WxHxD: 6.9 x 5.4 x 3.4 in. / 17.6 x 13.8 x 8.6 cm

### X96

In total performance and bottom-line value, this champion-grade Lowrance fishfinder delivers the best picture and features at the best price ever for inland and in-shore coastal angling.

- 200 kHz Skimmer® transducer with temp sensor and up to 60° fish detection coverage
- 1,500W peak-to-peak / 300W RMS; depths to 900' / 274 m

#110-76

5"/12.7 cm diag. Film SuperTwist 16-level gray scale

Incandescent screen-keypad backlighting

320 x 320 pixel resolution

Case WxHxD: 6.9 x 5.4 x 3.4 in. / 17.6 x 13.8 x 8.6 cm



Actual depth capabilities depend on transducer configuration and installation, bottom composition and water conditions. All sonar units typically read deeper in fresh water than salt water.

# Compact Sonar

**LOWRANCE**

When boat space is a factor – and there's no room for fishing errors – trust Lowrance to consolidate huge fishfinding features into a great choice of tight, solid, neatly packed compact sonar packages.

## X67c 200 kHz Sonar

Treat yourself and your eyes to stunning full-color, full-tilt Lowrance sonar excellence with a dazzling display for incredible visibility even in bright sunlight. Affordable and rich in fishfinder features and functions, the X67C is an angler's dream come true.

- 200 kHz Skimmer® transom-mount transducer with built-in temp sensor with up to 60° fish detection coverage
- 800W peak-to-peak / 100W RMS; depths to 600' / 183 m
- Super-sensitive receiver enhances shallow/deep water sonar performance
- Adjustable Ping Speed with automatic HyperScroll™ for high-speed sounding
- Real-time LCD flasher display
- COLORLINE™ enhances target separation and helps define bottom composition

**#110-50**

**#110-51** without transducer

**3.5"/8.9 cm diag. 256-color active matrix TFT**

**White LED screen-keypad backlighting**

**320V x 240H pixel resolution**

**Case WxHxD: 4.3 x 5.8 x 2.5 in. / 10.8 x 14.7 x 6.4 cm**



## X52 200 kHz Sonar

A perennial and powerfully compact favorite that's still a "best-buy" in a high-resolution monochrome fishfinder performer that's nicely-sized and nicely-priced to match.

- Connectivity with NMEA 2000® data-sharing networks and sensors
- 200 kHz Skimmer® transom-mount transducer with built-in temp sensor with up to 60° fish detection coverage
- 1,500W peak-to-peak / 188W RMS; depths to 800' / 244 m
- Super-sensitive receiver enhances shallow/deep water sonar performance
- FishReveal™ feature exposes targets hidden in cover and clutter
- Adjustable Ping Speed with automatic HyperScroll™ for high-speed sounding
- Real-time LCD flasher display
- GRAYLINE® enhances target separation and helps define bottom composition

**#110-61**

**4"/10.2 cm diag. Film SuperTwist 16-level gray scale**

**Screen-keypad backlighting**

**240V x 160H pixel resolution**

**Case WxHxD: 5.4 x 5.2 x 2.6 in. / 13.6 x 13.2 x 6.6 cm**



## X50 DS Dual-Search 83/200 kHz Sonar

From Lowrance innovation comes this versatile dual-search 83/200 kHz sonar for productive shallow and deep water fishfinding coverage. With superb target detail/separation, and advanced super-sensitive receiver, it's perfect for both inland lakes and coastal angling in an easy-to-use and easy-to-afford complete and compact sonar package.

- Dual-search Skimmer® transom-mount transducer with built-in temp sensor with up to 120° fish detection coverage @83 kHz
- 1,500W peak-to-peak / 188W RMS
- Depths from extreme shallows to 1,000' / 305 m
- FishReveal™ feature exposes targets hidden in cover and clutter
- Automatic Advanced Signal Processing (ASP™) operation
- GRAYLINE® enhances target separation and helps define bottom composition
- Split-screen zoom and sonar alarms

**#110-68**

**4"/10.2 cm diag. Film SuperTwist 4-level gray scale**

**Screen backlighting**

**240V x 160H pixel resolution**

**Case WxHxD: 4.3 x 5.8 x 2.5 in. / 10.8 x 14.7 x 6.4 cm**



## X59 DF 50/200 kHz Sonar

The coastal/Great Lakes version of the X52 for deeper salt water or downrigger tracking.

- Dual-frequency Skimmer® 50/200 kHz transducer with built-in temp sensor
- 300W RMS / 2,400W peak-to-peak; depths to 1,500' / 457 m @ 50 kHz
- Speed/distance sensor

**#110-63**

# IceMachine™ Portables

## Go-Anywhere Fishfinding Even On Ice.

Self-contained, ready to go fishing anytime anywhere, IceMachine™ color sonar/ GPS chartplotter and sonar-only portables are exceptional ice-fishing electronics. Active matrix TFT color displays don't fade in the brightest sunlight, nor slow down even in temperatures down to -20° F (-29° C). And both come with rugged, water-shedding case, with 12 vDC 7 amp sealed battery and charger, and a special 200 kHz bullet ice transducer.

### **NEW LMS-522c IceMachine™ Sonar/Chartplotter**

Complete for all-season fishfinding and navigation on-the-boat and on-the-ice performance. Features internal GPS+WAAS antenna, built-in mapping with over 3,000 U.S. lakes with depth contours, plus waterproof slot to plug-and-play high-detail chart options including Lowrance LakeMaster® ProMaps.

- 2,400W peak-to-peak / 300W RMS; depths to 900' / 274 m
- Super-sensitive receiver enhances shallow/deep water sonar performance
- COLORLINE™ for enhanced fish/structure/bottom separation
- Scrolling graph and special LCD flasher with Battery Status viewing modes
- Built-in 12-channel GPS+WAAS antenna and enhanced background map with lake depth contours
- Accepts Lowrance LakeMaster® ProMaps, Lowrance Fishing Hot Spots® PRO and Navionics® Gold mapping options with depth contours
- Stores up to 1,000 waypoints/1,000 event markers/100 routes
- Up to 100 retraceable plot trails
- Complete portability pack with 200 kHz bullet transducer and accessories for ice fishing
- 200 kHz Skimmer® transom-mount transducer with built-in temp sensor with gimbal bracket, knobs, power cable and hardware for permanent boat mounting

**#116-33**

**480 x 480 pixel resolution**

**5"/12.7 cm diag. 16-bit color TFT SolarMAX™; operates to -20° F**

**Fluorescent cold cathode screen-keypad backlighting**

**Head unit WxHxD: 6.9 x 5.4 x 3.4 in. / 17.6 x 13.8 x 8.6 cm**



### **X67c IceMachine™ Sonar**

A popular pick in a sonar-only model. Comes with complete portable power pack, with accessory options available for seasonal boat mounting.

- 800W peak-to-peak / 100W RMS; depths to 600' / 183 m
- Super-sensitive receiver enhances shallow/deep water sonar performance
- Scrolling graph and special LCD flasher with Battery Status viewing modes
- Automatic Advanced Signal Processing (ASP™) operation
- COLORLINE™ for enhanced fish/structure/bottom separation

**#110-54**

**3.5"/8.9 cm diag. 256-color active matrix TFT; operates to -20° F**

**White LED screen-keypad backlighting**

**320V x 240H pixel resolution**

**Head unit WxHxD: 4.3 x 5.8 x 2.5 in. / 10.8 x 14.7 x 6.4 cm**



Actual depth capabilities depend on transducer configuration and installation, bottom composition and water conditions. All sonar units typically read deeper in fresh water than salt water.

# GlobalMap® GPS Chartplotters

**LOWRANCE**

Navigation precision. Exacting reliability. Advancements in GPS features, functions, cartography, simpler operation and incredible affordability. Now, Lowrance innovation brings multi-function expandability to GlobalMap® navigation displays – like radar and networked sonar graphing via Lowrance Ethernetworks. More than ever, GlobalMap® is the better way to find your way.

## Shared Features

**Superb Background Map.** Enhanced built-in mapping includes over 3,000 U.S. lakes with high-resolution borders and depth contours.

**SolarMAX™ Displays.** Innovative technology for superior wide-angle and bright-sunlight viewing.

**Ethernetworks.** High-speed, high-capacity plug-and-play networking of displays with performance modules like Broadband Sounder-1.

**Lowrance Radar Compatible.** Radar overlay and other advanced performance features with many affordable radar choices.

**NMEA 2000®.** Connectivity with NMEA 2000® data-sharing networks and sensors.

**NMEA 0183.** RS-232 for radar, autopilot, DSC VHF and more.

## Highlights

- GPS+WAAS precision with NMEA 2000®-certified LGC-3000 external antenna
- Waterproof slots to load optional high-detail cartography on plug-and-play SD cards for display: Lowrance FreedomMaps™, Lowrance Fishing Hot Spots® PRO, Lowrance LakeMaster® ProMaps, Lowrance NauticPath™ USA Coastal & International, and select Navionics® electronic charts
- Enhanced data processing with super-quick screen updates
- Expansive Lowrance GPS features and functions

*See Product Comparisons - page 35.*



## GlobalMap® 9200c 10.4"

Big-screen, brilliant color navigation with GPS+WAAS precision as huge as the display. Richly featured for multi-function versatility coupled with solid Lowrance reliability. A true multi-tasker compatible for Lowrance radar, Lowrance Ethernetworks with Broadband Sounder-1 and NMEA 2000® networking.

#123-24

**10.4"/26.4 cm diag. 16-bit color TFT SolarMAX™**  
**Fluorescent cold cathode screen-keypad backlighting**  
**600V x 800H pixel SVGA resolution**  
**Case WxHxD: 12.2 x 9.1 x 3.7 in. / 31 x 23.1 x 9.4 cm**

*Shown with optional Navionics® HotMaps Platinum cartography.*



## GlobalMap® 8200c 8.4"

The dedicated GPS+WAAS chartplotter version of an industry award-winning Lowrance marine electronics design. Right-sized for boaters wanting big, sunlight-viewable color in a mid-size package offering peerless precision and performance. Also ready and able for extended duties of Lowrance radar, Lowrance Ethernetworks with Broadband Sounder-1 and NMEA 2000® networking.

#123-48

**8.4"/21.3 cm diag. 16-bit color TFT SolarMAX™**  
**Fluorescent cold cathode screen-keypad backlighting**  
**600V x 800H pixel SVGA resolution**  
**Case WxHxD: 10.6 x 7.8 x 3.7 in. / 26.9 x 19.8 x 9.4 cm**



## GlobalMap® 7200c 7"

Full-featured like all GlobalMap® large-format chartplotters in a popular, dazzling 7" diagonal color screen size. Likewise expandable for Lowrance radar, Lowrance Ethernetworks with Broadband Sounder-1 and NMEA 2000® networking.

#123-22

**7"/17.8 cm diag. 16-bit color TFT SolarMAX™**  
**Fluorescent cold cathode screen-keypad backlighting**  
**480V x 640H pixel full VGA resolution**  
**Case WxHxD: 9.3 x 6.8 x 3.7 in. / 23.6 x 17.3 x 9.4 cm**



## GlobalMap® 5200c 5"

Legendary GlobalMap® marine chartplotter features, precision and versatility in a full-size 5" format to fit most boats and budgets. Of course, also works with Lowrance radar, Lowrance Ethernetworks with Broadband Sounder-1 and NMEA 2000® networking.

#123-37

## GlobalMap® 5300c iGPS

An excellent, space-saving choice for vertical console mounting on open cockpit boats. Same as the GlobalMap® 5200C, with the convenience of an internal GPS+WAAS antenna.

#116-29

**5"/12.7 cm diag. 16-bit color TFT SolarMAX™**  
**Fluorescent cold cathode screen-keypad backlighting**  
**480 x 480 pixel resolution**  
**Case WxHxD: 6.9 x 5.4 x 3.4 in. / 17.6 x 13.8 x 8.6 cm**



# GlobalMap® Baja Off-Road GPS Chartplotters

**LOWRANCE**

In off-highway travel, recreational or racing, the No. 1 name and choice in GPS guidance precision and durability is solidly Lowrance Baja. It's the only GPS that goes to extremes to engineer exceptional satellite navigation that's tough enough to take on any terrain.

## Shared Features

**Ruggedized.** Special internal dampening protects components from even the most severe off-road vibration and shock.

**SolarMAX™ Displays.** Innovative technology enhances color brilliance with superior wide-angle and bright-sunlight viewing.

**GPS+WAAS Precision.** Dedicated, external Baja antenna for reliable tracking and steady satellite lock-ons even in the densest cover.

**Superb Background Map.** Enhanced built-in mapping with major roads, cities, landmarks and searchable interstate exit services database.

**Multiple Map Options.** Dust-proof slot(s) to load/display high-detail topo mapping on SD memory cards, like Lowrance FreedomMaps™ EX.

**Quick Draw.** Enhanced data processing with super-quick screen updates.

**NMEA 0183.** RS-232 output for data communications.

## NEW GlobalMap® Baja 840c 8.4"

By popular demand, Lowrance Baja extreme GPS goes big-time – with new, larger 8.4" color high-detail viewing. Developed from an award-winning size concept, the 840c displays easy-to-read navigation in a big-color format. Yet, still offers a right-sized package for most installations.

**#123-56**

**8.4"/21.3 cm diag. 16-bit color TFT SolarMAX™**

**Fluorescent cold cathode screen-keypad backlighting**

**600V x 800H pixel SVGA resolution**

**Case WxHxD: 10.6 x 7.8 x 3.7 in. / 26.9 x 19.8 x 9.4 cm**



## GlobalMap® Baja 540c 5"

For tighter vehicle spaces, this Lowrance Baja navigator delivers all the precision, ruggedized features, functions and versatility you could want in a more compact package with an exclusive 5" color display.

**#123-38**

**5"/12.7 cm diag. 16-bit color TFT SolarMAX™**

**Fluorescent cold cathode screen-keypad backlighting**

**480 x 480 pixel resolution**

**Case WxHxD: 6.9 x 5.4 x 3.4 in. / 17.6 x 13.8 x 8.6 cm**







# Marine VHF Radios

**LOWRANCE**

Superb performance profiles and expanded features highlight the new Lowrance line of VHF marine communications.



**LVR-880**

## **NEW LVR-880 DSC VHF+FM Fixed-Mount Marine Radio**

The first with an FM radio, NMEA® 2000 interface and Track-Your-Buddy™. Plus other premium features in a new and exceptional 25W/1W DSC marine radio.

**#022-20**

### **Special Features**

- VHF with stereo FM radio receiver with powerful dual audio amps
- Dual NMEA 0183 and NMEA 2000® DSC integration
- Exclusive "Track-Your-Buddy" feature connects DSC hi-res position polling to Lowrance NMEA 0183 and NMEA 2000® chartplotters to show the location of up to three boating friends on the GPS chart display
- GREAT CIRCLE NAVIGATION to WAYPOINT with data transfer capability to chartplotters
- 200 waypoints with up to 6 character alpha/numeric naming
- Full Class-D or SC-101 automatic distress operation transmits/receives high-res vessel position and group calls via NMEA 0183/ NMEA 2000® output to chartplotters
- Channel naming
- Dual weather alert systems provide S.A.M.E. for county-to-county monitoring and standard NOAA Wx 1050Hz tone alert

- Immediate GPS boat position and time when connected to a compatible GPS chartplotter
- Simplified intercom with talkback plus built-in 22W hailer-horn with Auto Fog
- Extra-large and bright custom FSTN full-matrix screen with lat/lon position display without scrolling
- Large 2.24" (57 mm) speaker for great audio output when running at high speed
- 6 tactile microphone keys with WX key, powerful speaker and easy left- or right-handed control
- Rotary Channel control with press-to-enter
- 3 favorite channel mode with scan
- Instant "GO" and MOB key
- 3W external speaker jack
- Case and microphone fully waterproof (JIS 7 submersible)
- All available USA, Canadian, International and 10 weather marine channels with channel naming (country specific)
- Flush-mount kit and dust cover included

**Large 1.3"V x 2.6"H (3.3 x 6.6 cm) FSTN full-matrix LCD Backlit/dimmable display**  
**64V x 128H pixel resolution**  
**Case (WxHxD): 7.1 x 3.8 x 6.1 in. / 18 x 9.6 x 15.6 cm**  
**Microphone (WxHxD): 3.3 x 2 x 1.4 in. / 8.5 x 5.1 x 3.5 cm**

## **NEW LVR-250 DSC VHF Fixed-Mount Marine Radio**

Solid reliability and attractive features without the high price in a new, high-quality 25W/1W fixed-mount VHF marine radio with DSC.

**#022-19**

### **Special Features**

- Full DSC Class D/SC-101 automatic distress operation with high-resolution position polling and group calling via NMEA 0183 output to chartplotters
- Immediate GPS boat position and time when connected to a compatible GPS chartplotter
- Large, clear FSTN screen with lat/lon position display without scrolling
- Channel naming
- Weather alert
- 6 tactile microphone keys with WX key, powerful speaker and easy left- or right-handed control
- Rotary Channel control with press-to-enter
- Super-large 16/9 calling channel key
- 3 favorite channel mode with scan
- Local/Distant feature eliminates interference
- Selectable Dual and TriWatch modes
- 3W external speaker and GPS interface jacks



**LVR-250**

- Case and microphone fully waterproof (JIS 7 submersible)
- All available USA, Canadian, International and 10 weather marine channels with channel naming
- Flush-mount kit and dust cover included

**Ample 1"V x 1.8"H (2.6 x 4.6 cm) FSTN matrix LCD Backlit/dimmable display**  
**4 line x 12 character alpha/numeric with custom icons**  
**Case (WxHxD): 6.3 x 2.8 x 6.1 in. / 16 x 7.2 x 15.6 cm**  
**Microphone (WxHxD): 3.3 x 2 x 1.4 in. / 8.5 x 5.1 x 3.5 cm**

## NEW LHR-20 and LHR-22 Handheld Marine VHF Radios

All-new Lowrance waterproof 5W/1W VHF handheld radios feature Li-Ion power for the best-in-class battery life, plus the LHR-22 sports the newest camo pattern from REALTREE®.

**LHR-20 #022-15**

**LHR-22 #022-16**

### Shared Special Features

- Includes Li-Ion battery pack and charger
- Totally waterproof to strict JIS 7 submersible standards
- All USA, Canadian and International channels
- Selectable 5W/1W transmit power
- High-bright red LED TX indicator confirms transmissions
- RX/TX signal strength meter
- Memory indicator plus 4-bar battery life gauge
- Power Saver Circuitry automatically switches to battery saver after 10-second TX lapse
- Receive Signal Strength Indicator (RSSI) displays strength of incoming/outgoing signals
- NOAA Wx 1050Hz tone alert for weather/storm warnings
- Extended battery life:
  - 10 hours (5W on 5-5-90% ratio)
  - 13 hours (1W on 5-5-90% ratio)

### LHR-20 Includes

- Radio with 1600 mAh Li-Ion battery pack
- Rubber Duck antenna
- Desktop charger with 2-color LED indicator and wall adapter
- AC to DC wall charger
- Wrist strap and belt clip

### LHR-22 Includes

Same as LHR-20, plus REALTREE® ADVANTAGE MAX-4 HD® camo case and spare camo alkaline battery tray.

#### Large, enhanced LCD

#### Illuminated display and function keys

**Case without antenna (WxHxD): 4.8 x 2.4 x 1.4 in. / 6.2 x 12.3 x 3.6 cm**



**LHR-20**



**LHR-22**



# New High-Definition Digital Radar

**LOWRANCE**

Thanks to advanced digital signal processing, Lowrance now offers two new high-definition digital radome choices for fast, detailed radar target discrimination. Compact, lightweight and networkable, each produce exceptional detection of small and distant targets with superior accuracy in all conditions – dark, fog and rain alike – with the greatest of ease and the highest of performance.

**Radar/Chart Overlay.** Interfaces charts and radar detail in a single, detail-rich display when coupled with an optional, compatible Simrad heading sensor.

**Clear Viewing.** Tune, Gain and Sea Clutter adjustment.

**Smart STC.** Digital Sensitivity Time Control curves reject clutter with setting of return strength/distance thresholds.

**Color Recognition.** Selectable color palettes including Full Color Mode to distinguish between strong and weak targets.

## **NEW LRA-1800 Radome**

- 2 kW, 18" scanner w/2 kW processor
- 5.2° horizontal beamwidth, 25° vertical beamwidth
- Up to 24 nm range

**#121-08**

## **NEW LRA-2400 Radome**

- 4 kW, 24" scanner w/4 kW processor
- 4° horizontal beamwidth, 25° vertical beamwidth
- Up to 36 nm range

**#121-09**



**LRA-1800**



**LRA-2400**

# Exceptional Radar Performance and Value

Lowrance delivers advanced performance and multiple choices in X-Band radar with outstanding features.

**Radar/Chart Overlay.** Interfaces charts and radar display when coupled with an optional, compatible Simrad heading sensor.

**Clear Viewing.** Three-level interference rejection, plus FTC and STC clutter rejection with gain adjustment up to 256 levels each.

**Range Scales.** From 1/8 nm minimum to 24, 36 or 48 nm maximum range\* scales.

**Automatic Tuning.** With 7 levels of Trail Settings functions.

**EBL/VRM Tracking.** Track up to 3 targets with a selectable safety zone off mode.

## **LRA-2000 Radome**

- 4kW, 24" scanner
- 4° horizontal beamwidth, 25° vertical beamwidth
- Up to 36 nm range

**#121-02**

## **LRA-4000 Open Array**

- 4 kW, 4' scanner
- 2.4° horizontal beamwidth, 25° vertical beamwidth
- Up to 48 nm range
- Requires motor

**#121-03**

## **LRA-5000 Open Array**

- 4 kW, 5' scanner
- 1.7° horizontal beamwidth, 25° vertical beamwidth
- Up to 48 nm range
- Requires motor

**#121-04**

## **Motor**

For LRA-4000 and LRA-5000.

**#121-06**



**LRA-2000**

**LRA-4000/5000**

\*Radar range depends on fog, rain and other atmospheric conditions.



## Simrad Heading Sensor Options

For use with all Lowrance radar and chartplotters to activate the radar/chart overlay display feature. Both for NMEA 2000® network connection only.

### FC40 Fluxgate Compass.

Includes 5M SimNet Cable.

**22090187**

### Also need:

SimNet cable to Micro-C male.

**22005729**

SimNet Joiner Yellow without Terminator.

**44172260**

### RC42 Rate Gyro Fluxgate Compass.

Includes 5M SimNet Cable.

**22090195**

Lowrance N2K-T-RD T-Connector

**#119-79**



# Cross-Navigation GPS

LOWRANCE

## NEW XOG™ Crossover Navigator GPS for Open Road to Open Water to Far Afield

Taking a new direction in precision, all-purpose navigation, the innovative new Lowrance XOG™ cross-navigation, 12-channel GPS features ready-to-go street navigation and loads of optional outdoor maps. Rugged, weatherproof, fully portable and super-accurate with multimedia extras, the new XOG™ is the one-for-all companion for all your travels. Inside the car, on the trail, or in the boat!

#125-19

### Key Features

- Bright, 3.5" TFT color touchscreen with easy-to-use menus
- Built-in, turn-by-turn NAVTEQ® street navigation detail with voice and visual guidance, plus over 3 million Points-of-Interest destinations
- Internal GPS antenna with superior tracking sensitivity
- SD memory card slot for mapping options, MP3 or JPEG picture files
- Internal, rechargeable Li-Ion battery
- Built-in loudspeaker
- Weatherproof design; splash-proof to IPX4 standards
- Accepts the most mapping options of any GPS including surface topo and marine depth contours

### Includes

- Device cradle
- Suction cup mounting bracket
- 12 vDC accessory plug power/charger cable
- Mini USB cable

### Accessory Options

- MB-32 - Cycle handlebar mount #124-52
- PAC-9 - 120 vAC power adapter/charger #127-41
- CC-8 - Carrying case/holster #93-21



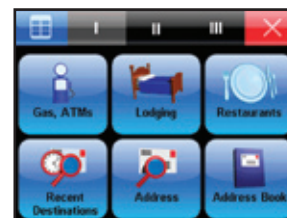
3.5"/8.89 cm diag. 16-bit color TFT touch-screen

White LED screen backlighting

320V x 240H pixel resolution

Case WxHxD: 3.75 x 3.25 x .075 in. / 9.5 x 8.2 x 1.9 cm

# XOG™



XOG™ comes out-of-the-box loaded with high-detail NAVTEQ® turn-by-turn navigation with POIs.

Enjoy easy operation thanks to the intelligently-designed XOG™ user interface with minimal menus.



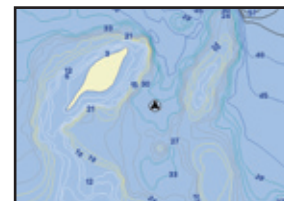
# XOG™ Optional Maps

## Affordable Multiple Choices for Your Out-of-Car Experiences

### Preloaded plug-and-play SD memory cards

An unequalled selection of your geographic areas of interest for on-land or on-water travel. See page 26 for more details.

- **Lowrance FreedomMaps™** -- expanded USA and Canada EX topo, Europe
- **Lowrance Fishing Hot Spots® PRO** - land and lake detail four USA regions
- **Lowrance LakeMaster® ProMaps** - exquisite fishing detail for Wisconsin, Minnesota, Michigan
- **Lowrance NauticPath™** -- USA and International coastal electronic charting
- **Navionics®** -- Classic and Gold



### NEW MapSelect.com

Your unique portal to the most (and most inexpensive) mapdata selections, with easy online purchase access anytime. Simply select, pay, download to SD card, insert in XOG™ and go! Visit [www.mapselect.com](http://www.mapselect.com) for more information.

- **U.S. satellite and aerial imagery** - 2 m resolution, conterminous USA
- **Enhanced USGS topo** - 2 m resolution, 1:24k scale; conterminous USA, Alaska, Hawaii, Puerto Rico
- **BLM mapping** - 8 m resolution, 1:100k scale conterminous USA



## iWAY® 600c

### Big-Screen Navigation for Highways & Waterways

This award-winning achiever is the first to offer street- and marine-ready navigation in one complete package at an affordable price. With satellite imagery overlays of major metro areas, and more, it's the most complete navigation aid for land or water.

#125-01

#### Key Features

- 12-channel GPS+WAAS with built-in antenna
- Satellite imagery for major USA and Canada metro areas
- Rugged 30GB hard drive preloaded with USA and Canada turn-by-turn NAVTEQ® map detail with over 5.5 million Points-of-Interest destinations
- Enhanced U.S. Lake Maps and NauticPath™ USA Coastal charts
- Stereo MP3 player and picture viewer
- Full-spectrum FM transmitter with auto-muting during voice directions
- 5GB hard drive free space for MP3/JPEG files
- Automatic re-routing for missed turns or detours
- Autocomplete feature for address/search entries
- Stores up to 1,000 addresses

#### Includes

- Suction cup mounting bracket
- 12 vDC accessory power cable with built-in speaker
- 120 vAC power adapter
- USB cable
- Soft protective cover

5"/12.7 cm diag. 16-bit color TFT touch-screen

Fluorescent cold cathode backlit screen/blue LED backlit keypad

640V x 480H pixel resolution

Case WxHxD: 6.1 x 4.5 x 2.15 in. / 15.5 x 11.55 x 5.45 cm



# iFINDER® Handheld GPS

**LOWRANCE**



## iFINDER® HUNT c

Presenting better hunting through technology with brilliant, versatile color GPS performance. Designed by hunters for hunters, the iFinder® HUNT c is a rugged 16-channel GPS that's loaded with incredible features packed inside the Realtree Hardwoods® HD™ camo-clad and waterproof case. A special Scouting mode lets you create a perimeter border and mark key spots with exclusive hunting-related icons like stands, game types, ATV and many more. In Hunting mode, distances are in yards to help range targets. Along with extras like electronic compass, altimeter and high-detail mapcard options, the HUNT c makes a perfect companion for pre-hunt and hunt, as well as for fishing, boating, or everywhere else outdoors.



## Key Features

- 16-channel GPS+WAAS precision
  - Enhanced built-in background map with interstate exit services and nav aids
  - Waterproof slot to display optional cartography on plug-and-play MMC/SD cards: Lowrance FreedomMaps™, Fishing Hot Spots®, LakeMaster®, NauticPath™ USA Coastal & International, and select Navionics® electronic charts
  - Electronic compass with map overlay feature
  - Barometric altimeter with weather alerts
  - 80 color marker icons with 17 hunting-specific choices
  - Built-in microphone to record waypoint voice notes on memory card\*
  - Plays MP3 audio files on memory cards\*
  - Up to 16-hour operation on two AA batteries (not included)
  - Includes 12 vDC power adapter for vehicle or ATV use
- \*Memory card and headphone adapter sold separately.

**#112-661**

**2.83"/ 7.2 cm diag. 16-bit color TFT**

**White LED backlighting**

**320V x 240H pixel resolution**

**Case WxHxD: 2.5 x 5.6 x 1.2 in. / 6.4 x 14.2 x 3 cm**

## iFINDER® HUNT

Virtually all the same features of the color unit featuring a high-definition monochrome display, 12-channel GPS+WAAS receiver and 42 marker icons plus 17 special hunting icons. Offers voice notes recording without MP3 player.

**#112-331**

**3"/ 7.6 cm diag. Film SuperTwist 16-level gray scale**

**White LED backlighting**

**240V x 180H pixel resolution**

**Case WxHxD: 2.5 x 5.6 x 1.2 in. / 6.4 x 14.2 x 3 cm**







## iFINDER® H20 c

For anglers, boaters and anyone navigating the great outdoors, the waterproof color iFinder® H20 c is made and priced perfectly right. The 16-channel GPS+WAAS accuracy, dazzling color detail and rapid screen updates makes it easy to navigate and view. An intuitive menu makes for easy operation. And like most iFinder® models, it accepts a wide choice of high-detail, plug-and-play mapping options for navigating land or water. It's everything you want in a high-color handheld, but without the high price.



### Key Features

- 16-channel GPS+WAAS precision
- Enhanced built-in background map with interstate exit services and nav aids
- Waterproof slot to display optional cartography on plug-and-play MMC/SD cards: Lowrance FreedomMaps™, Fishing Hot Spots®, LakeMaster®, NauticPath™ USA Coastal & International, and select Navionics® electronic charts
- 63 color graphic icons to mark spots
- Stores up to 1,000 routes/1,000 waypoints/100 retracable trails
- Waterproof to IPX7 standards.
- Up to 14-hour operation on two AA batteries (not included)
- Includes 12 vDC power adapter

#112-671

**Display: 2.83"/ 7.2 cm diag. 16-bit color TFT**

**White LED backlighting**

**320V x 240H pixel resolution**

**Case WxHxD: 2.5 x 5.6 x 1.2 in. / 6.4 x 14.2 x 3 cm**

## iFINDER® H20

All the same features of the color unit featuring a high-definition monochrome display, 12-channel GPS+WAAS receiver, 42 marker icons and up to 12-hour operation on two AA batteries (not included).

#112-151

**Display: 3"/ 7.6 cm diag. Film SuperTwist**

**16-level gray scale**

**White LED backlighting**

**240V x 180H pixel resolution**

**Case WxHxD: 2.5 x 5.6 x 1.2 in. / 6.4 x 14.2 x 3 cm**



## iFINDER® EXPEDITION™ c

It's easy to see why the iFinder EXPEDITION™ c is one of the most popular Lowrance GPS handhelds for land or water. And it's more than just the large, bright, sunlight-readable color display. It offers the advantages of 16-channel GPS+WAAS navigation, plus fast satellite locks and map redraws. Plus added bonuses of compass, altimeter, voice note recording, scores of marker icons, and loads of storage for waypoints and routes. But perhaps the best bonus of all is that it's so nicely affordable for such a full-featured navigator.



### Key Features

- 16-channel GPS+WAAS precision
- Enhanced built-in background map with interstate exit services and nav aids
- Waterproof slot to display optional cartography on plug-and-play MMC/SD cards: Lowrance FreedomMaps™, Fishing Hot Spots®, LakeMaster®, NauticPath™ USA Coastal & International, and select Navionics® electronic charts
- Electronic compass with map overlay feature
- Barometric altimeter with weather alerts
- Unique Scouting mode to create perimeter borders
- 63 color graphic icons to mark spots
- Built-in microphone to record waypoint voice notes on memory card\*
- Plays MP3 audio files on memory cards\*
- Up to 14-hour operation on two AA batteries (not included)
- Includes 12 vDC power adapter

\*Memory card and headphone adapter sold separately.

#112-861

**Display: 2.83"/ 7.2 cm diag. 16-bit color TFT**

**White LED backlighting**

**320V x 240H pixel resolution**

**Case WxHxD: 2.5 x 5.6 x 1.2 in. / 6.4 x 14.2 x 3 cm**

## iFINDER® GO2

Here's one monochrome handheld that packs a punch in precise 16-channel GPS+WAAS performance with built-in mapping in a comfy, compact waterproof package. Responsive, accurate, easy to use and loaded with features at a surprising low price. Over 50 hours operation on two AA batteries. A great choice for the first-time user and as a back-up GPS to a primary navigator.

### Key Features

- 16-channel GPS+WAAS precision
- 64 MB memory with interstate exit services, major roads/cities, lakes, rivers and national parks/forests
- 42 graphic icons to mark spots
- Stores up to 1,000 routes/1,000 waypoints/100 retracable trails
- Waterproof to IPX7 standards.
- Up to 50-hour operation on two AA batteries (not included)

#112-492

**Display: 2"/ 5 cm diag. Film SuperTwist 16-level gray scale**

**Amber LED backlighting**

**200V x 140H pixel resolution**

**Case WxHxD: 2.12 x 5.15 x 1.24 in. / 5.4 x 13.1 x 3.15 cm**



Enjoy excellent coverage, choices and value in plug-and-play cartography on memory cards for navigating land or water. Simply insert into your compatible Lowrance GPS, and you're ready to go — with the greatest of detail, affordability and ease.



## Lowrance FreedomMaps™ USA EX

Expanded coverage on high-capacity SD memory cards for the whole USA. Features over 3,000 lakes with depth contours. Plus topo detail including elevations and hunting databases, cities/highways/landmarks, searchable Points-of-Interest and much more. Great detail and each a great deal in a choice of 5 broad geographic regions.

**F101EX-N** - MT, WY, ND, SD, NE, MN, IA, MI, WI, IL, IN  
#108-209

**F102EX-E** - ME, VT, NH, MA, NY, CT, NJ, PA, DE, RI, MD, WV, OH, VA, KY, TN, NC, SC, GA, AL, FL  
#108-210

**F103EX-S** - AZ, NM, CO, KS, OK, TX, MO, AR, LA, MS  
#108-211

**F104EX-W** - CA, NV, UT, ID, OR, WA  
#108-212

**F105EX-A&H** - AK, HI  
#108-213

## Lowrance FreedomMaps™ Canada EX

Superbly-detailed electronic Canadian mapping with land-based topo data coverage for virtually all provinces and territories. Each SD memory card features world class map data from DMTI Spatial, with cities & towns, highways, city & rural roads, railways, rivers, streams, lakes & ponds, detailed shorelines, province & municipality boundaries, topographical contours, plus searchable Points-of-Interest, and much more.

**F110EX-NC** - Nunavut, Northwest Territories, Yukon Territory, British Columbia, Alberta, Saskatchewan, Manitoba, Ontario, Quebec, Newfoundland, Labrador and Hudson Bay.  
#108-214

**F111EX-WC** - British Columbia, Alberta, Saskatchewan, Manitoba, Yukon NT and Nunavut, Great Slave Lake, Lake Superior, Hudson Bay, plus Seattle and Spokane coverage.  
#108-215

**F112EX-EC** - Manitoba, Ontario, Quebec, Newfoundland, Labrador, Prince Edward Island, Nova Scotia, New Brunswick, Hudson Bay and all Great Lakes, plus Milwaukee, Chicago, Toledo, Detroit, Cleveland, Buffalo and Syracuse.  
#108-216



## Lowrance Fishing Hot Spots® PRO

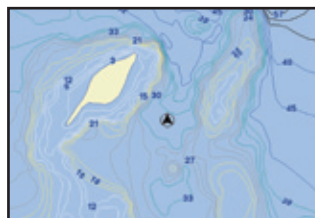
The serious Lowrance angler's choice for navigation guidance on water and off. A choice of four regional high-capacity SD memory cards collectively present depth contours for 3,600 of America's prime fishing lakes, with over 380 lakes with legendary Fishing Hot Spots depth detail and marked fishing areas. Each also include exclusive Lowrance MapCreate™ Series 7 urban and rural detail of roads, highways, cities, searchable Points-of-Interest and more for getting to, around and from the lake.

**FHSP-N** - IL, IN, IA, MI, MN, MT, NE, ND, SD, WI, WY  
#108-205

**FHSP-E** - AL, CT, DE, FL, GA, KY, ME, MD, MA, NH, NJ, NY, NC, OH, PA, RI, SC, TN, VA, WV  
#108-206

**FHSP-S** - AZ, AR, CO, KS, LA, MS, MO, NM, OK, TX  
#108-207

**FHSP-W** - CA, ID, NV, OR, UT, WA  
#108-208



## Lowrance LakeMaster® ProMaps

A decided favorite for Michigan, Minnesota and Wisconsin boaters and anglers with incredibly-detailed, expanded-coverage lake maps of popular fishing destinations. Along with thousands of lakes and ponds, and hundreds with depth contours, all ProMaps cards feature high-detail LakeMaster® surveyed lakes with 1'-3' depth contours. Plus, exclusive Lowrance MapCreate™ cartography is included for excellent city/roads/surface detail, plus thousands of searchable Points-of-Interest.

**LKPM-MI** - Over 18,000 Michigan lakes, bays, rivers and ponds; 800+ lakes with depth contours, with 49 lakes featuring high-definition LakeMaster depth contour surveys. Plus 96 lakes in IL, IN, OH and WI.  
#108-202

**LKPM-MN** - Over 750 Minnesota lakes; 79 lakes with the LakeMaster high-detail lake surveys. Includes WI, MI, IA, SD and ND waters.  
#108-203

**LKPM-WI** - 100 Wisconsin lakes with LakeMaster depth contour surveys, plus over 390 featuring standard depth contour intervals. Includes lakes in MI, IL and MN.  
#108-204

# Detailed, Coastal Electronic Charting Bargains!

## Lowrance NauticPath™ USA Coastal

Detail-rich marine charting, preloaded on SD memory card for your Lowrance GPS, for one amazing low price. NauticPath™ USA Coastal delivers incredible, object-oriented detail with shaded depth contours, intertidal zones, spot soundings, wrecks, nav aids, port plans, restricted areas, anchorages, lights, tides & currents, expansive chart information (number, name, scale, etc.) and other navigation features. Just one card gives you expansive electronic chart coverage of the East, West, Gulf, Hawaii, and Alaska coasts, the Great Lakes, plus the Bahamas, Puerto Rico, and the U.S. Virgin Islands - all with the appearance of paper charts with seamless vector graphics. All this without unlock codes or added costs makes Lowrance NauticPath™ coastal electronic charts an unequalled marine cartography value!

**NP-USA #108-129**



## Lowrance NauticPath™ International

When going global, you can experience the same high-level NauticPath™ offshore/coastal navigational electronic chart detail and information, with worldwide coverage choices, at an affordable price point compared to any other. Each NauticPath™ International choice is preloaded on SD memory card for plug-and-play convenience with your compatible Lowrance GPS. For exhibits on individual chartcard coverage areas, visit the Mapping area of the Lowrance website.

**NP-Caribbean #108-192**

**NP-Central America/West #108-193**

**NP-South America #108-194**

**NP-Europe West #108-195**

**NP-Europe North #108-196**

**NP-Mediterranean #108-197**

**NP-Africa/MiddleEast/India #108-198**

**NP-SEAsia/PacificIsland #108-199**

**NP-Australia/NewZealand #108-200**

**NP-Japan/East Asia #108-201**



# The Most Affordable System for Virtually Unlimited Mapmaking Ever!

## Lowrance MapCreate™ USA Series-7 Accessories Pack

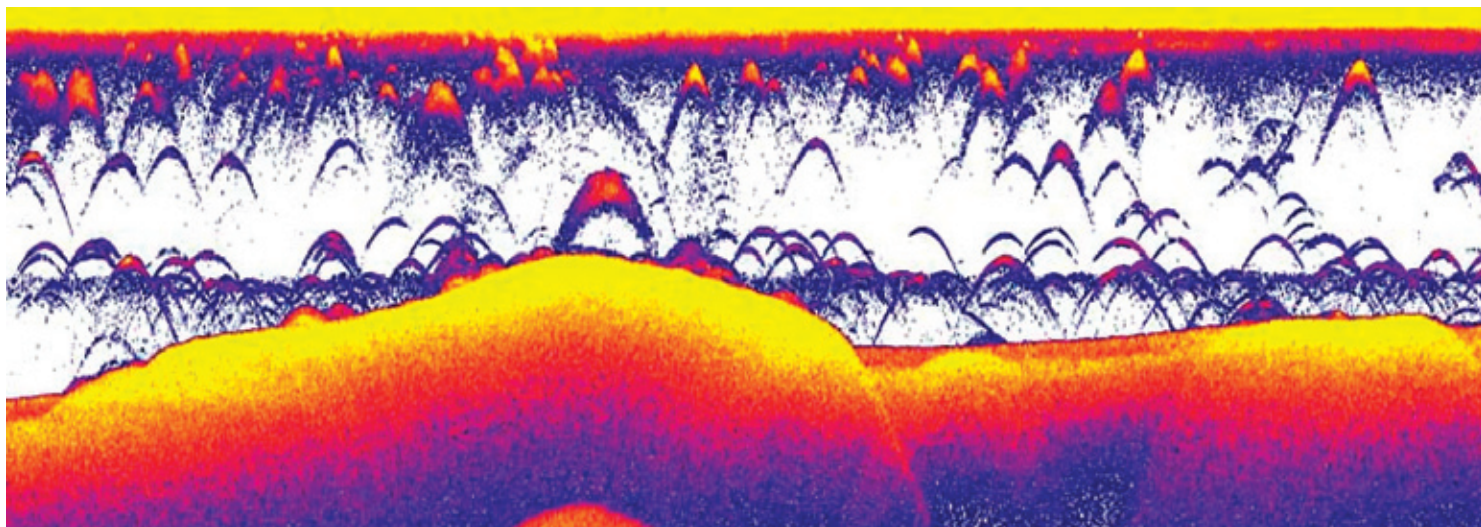
The complete, enhanced and expanded Lowrance system to make your own detailed topo mapcards over and over on your PC, with coverage for all 50 states. One DVD includes over 3,000 lakes with depth contours, topo contours with elevation markers, enhanced shorelines detail, 2 million Points-of-Interest, exclusive hunting databases, cities, highways, landmarks and scores more. Includes SD card reader-writer and blank, high-capacity SD memory card for a surprisingly low price!

Compatible for PC systems with Pentium 133 Mhz or higher and a DVD drive, 64MB RAM (128MB recommended), 200MB free hard disc space, high-color (16 bit) display, MicroSoft® Windows® 98 or higher  
**#95-61**



All trademarks are property of their respective owners.

Advanced. Plug-and-play. High-speed. Featuring ethernet-based networkable, expandable performance modules to take you to the next level of fishing success!



Lowrance Broadband Sounder-1 unretouched on-the-water sonar chart recording with 83 kHz sounding.

## NEW Lowrance Broadband Sounder-1

Introducing the next-generation of Lowrance fish-finding technology. This unique software-driven sonar optimizer produces peerless echo clarity and displays the most striking underwater definition ever achieved. It delivers digitally-purified marking/separation of fish, structure, thermoclines and bottom, while virtually eliminating surface and turbulent water clutter. It also extends sounding depths to thousands of feet without loss of bottom readings.

For use with a single Lowrance unit with 5-pin ethernet connector, or networked with a wide choice of compatible Lowrance models, Lowrance Broadband Sounder technology is the new standard in ultimate sonar performance.

### #132-00

- Compatible with all 2007 and later LCX, LMS, X and GlobalMap® Lowrance models with 5-pin ethernet connector (2007 models require free software upgrade)
- Connectivity between transducer and single head unit, or up to four compatible head units using optional Navico Expansion Port-1
- Single Broadband Sounder-1 module connects to any Lowrance transducer: Skimmer®, pod, shoot-thru and bolt-thru hull
- Automatic operation at any frequency selected: 50, 83 and 200 kHz
- Nominal output power 250W peak-to-peak / 31W RMS
- Analog output power equivalent 30,000W peak-to-peak / 3,750W RMS
- Tested sounding depths to 5,000' / 1,525 m

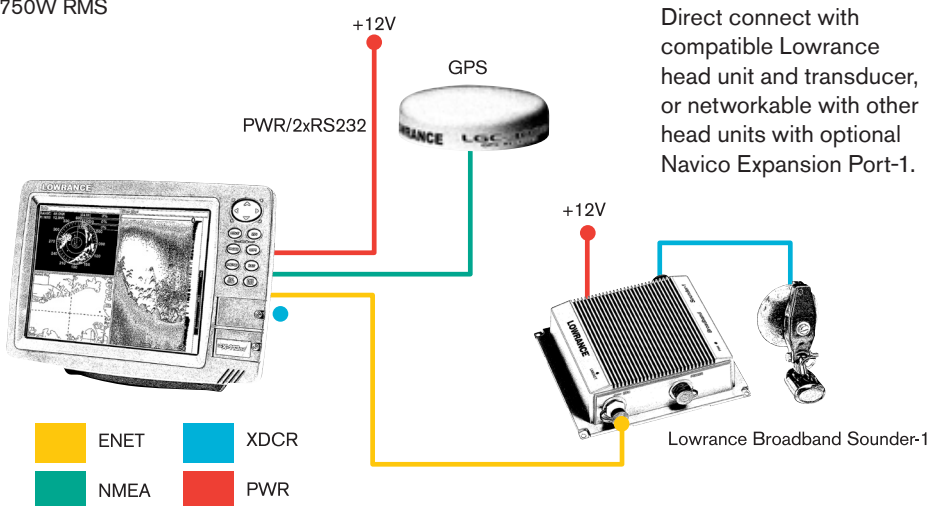
**WxHxD: 8.3 x 2.3 x 7.4 in. / 21 x 5.76 x 18.8 cm**

**1.82 lbs. / .82 kg**

**Waterproof to IPX7 standards**

**9.5 - 32 vDC switched input power**

**-4° to +176° F (-20° to +80° C) temp range**



## NEW Navico Expansion Port-1

A plug-and-play hub for high-speed data-sharing of multiple LCX, LMS and GlobalMap® products with the performance Broadband Sounder-1 module across the onboard network. Waterproof expansion ports resist corrosive marine environments. Unused expansion ports capped for future expansion.

**#132-03**

- Robust 100-megabit switch for high-speed data transfer
- Compatible with all 2007 and later LCX, LMS, X and GlobalMap® Lowrance models with 5-pin ethernet connector
- Transmits sonar graphing display/control on GlobalMap® chartplotters when networked with sonar-equipped Lowrance units
- Connectivity for up to four compatible head units per expansion module
- Links with other Expansion Port-1 modules for added/future expansion

**WxHxD: 8.3 x 2.3 x 7.4 in. / 21 x 5.76 x 18.8 cm**

**1.82 lbs. / .82 kg**

**Waterproof to IPX7 standards**

**9.5 - 32 vDC switched input power**

**-4° to +176° F (-20° to +80° C) temp range**

## Ethernetworks Cables

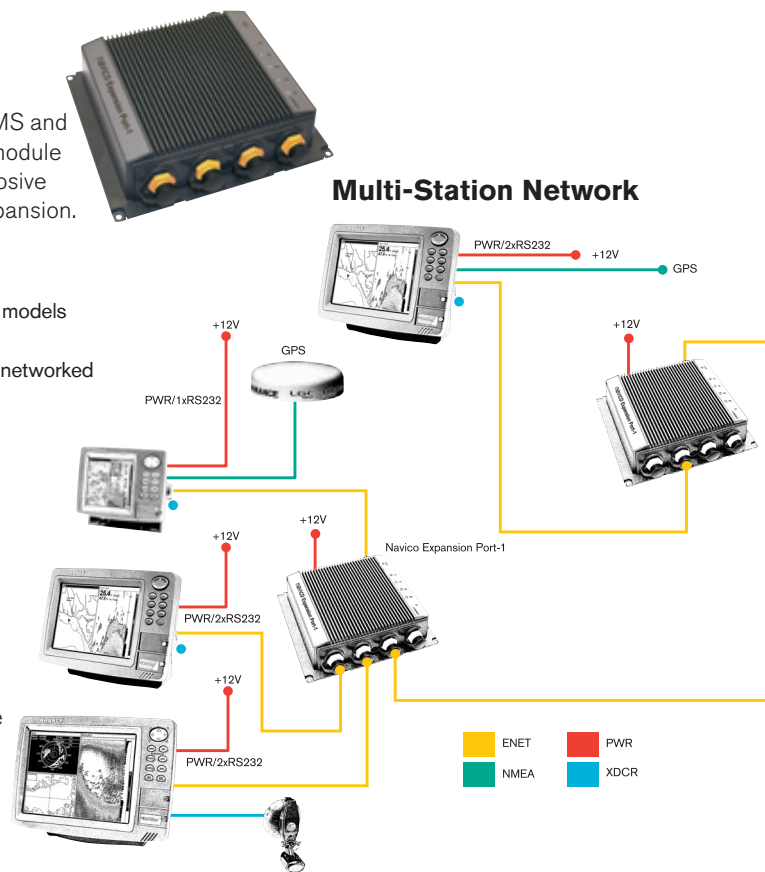
Rugged, high-speed, moisture- and solvent-resistant data cables withstand the toughest onboard marine environments. For Lowrance models with 5-pin yellow ethernet connector.

2-ft. ETHEXT-2YL **#127-28**

15-ft. ETHEXT1-5YL **#127-29**

25ft. ETHEXT-25YL **#127-30**

50-ft. ETHEXT-50YL **#127-37**



## Lowrance NMEA 2000® Networking

In addition to compatible head units connectivity for multi-station, onboard data-sharing, Lowrance offers a full array of non-proprietary cabling, gauges and sensors for NMEA 2000® low-bandwidth networking. With scores of display models that feature an approved NMEA 2000® "red" connector, only Lowrance offers the most choices, the most complete/configurable user interface for devices monitoring, and waypoint/sonar depth sharing on the network.

### Electronic Probes (EPs)

NMEA 2000® certified Electronic Probe sensors with built-in "smart module." Each fully programmable for greater accuracy in network data delivery.

**EP-60R Fuel Flow #120-39** Gasoline only, one per engine. Sapphire bearing technology extends life and increases accuracy even at low flow. Outputs Fuel Flow, Fuel Used, Trip Fuel Used and Seasonal Fuel Used data to the network.

**EP-65R Fluid Level #120-41** Compatible on most boats, and a range of fluids: fuel; fresh, waste or black water; live well; and oil. Allows calibration for more accurate fluid level readings for boats with odd-shaped tanks.

**EP-70R Speed #120-49** Paddle wheel for speed and distance display; accurate for drift and low-speed sensing.

**EP-80R Temperature #120-51** Configurable sensor for surface water, livewell, baitwell, cabin and engine room temp readings, -20°C to 80°C (-4° to 176° F).

**EP-80R TH Temperature #120-53** Configurable temp sensor for thru-hull installation.

**EP-90R Pressure #120-29** Outputs pitot speed or engine pressure readings – boost, coolant, fuel, engine or transmission oil. 100 psi max.

### Multi-Function Gauges

Multi-display, high-contrast round-dot matrix gauges display graphic and numerical digital data. Each receive NMEA 2000® data to display real-time readings from electronic probes (EPs). Advanced LED backlighting, with connectivity to a remote speaker for alarms.



**LMF-400** Fits 3-3/8" (86 mm) dia. hole  
With EP-60R Fuel Flow sensor. **#49-621**  
Without sensor. **#49-541**



**LMF-200** Fits standard 2-1/8" (55 mm) dia. hole  
With EP-60R Fuel Flow sensor. **#49-611**  
Without sensor. **#49-551**

### Engine Interface Cables

Cables for top outboard brands connects engines to NMEA 2000® networks to display engine data.

Yamaha (late model) Engine Interface **#120-37**

Suzuki (DF Series) Engine Interface **#120-55**

Evinrude (E-TEC) Engine Interface **#120-62**

### NEW Skimmer® EP-DDS Transducer

Special edition 50/200 kHz dual-frequency transducer that transmits digital depth and temp to all displays connected to a NMEA 2000® network.

**#47-99**



# In-Dash Digitals

**LOWRANCE**

## LCF-1440 LCD Flasher

Enjoy real-time fishfinder performance with this feature-rich, easy-to-use LCD flasher. Features convenient in-dash fit, crisp glare-free viewing, high-speed operation, solid Lowrance reliability and a great low price.

- 200 kHz Skimmer® transom-mount transducer with built-in temp sensor with up to 60° fish detection coverage
- 800W peak-to-peak / 100W RMS; depths to 600' / 183 m
- Auto and manual depth ranges: 10, 20, 40, 80, 160, 320 and 640 feet
- Automatic Advanced Signal Processing (ASP™) operation
- Built-in back-up memory for key user settings

**#49-471**

**2.5"/6.3 cm diag. Film SuperTwist full dot matrix; 4-level gray scale**

**White LED screen-keypad backlighting**

**132 x 132 pixel resolution**

**Case WxD: 3.8 x 3.5 / 9.7 x 9.1 cm**



**LCF-1440**

## LST-3800 Digital Depth/Temp

Reliability, accuracy and simplified operation mark this digital depth gauge with water temp readings. Ideal for inland and in-shore coastal boats.

- High-contrast dot matrix display with advanced white LED backlighting
- 200 kHz Skimmer® transom-mount transducer with built-in temp sensor
- Depths to 700' / 213 m
- Shallow and deep depth alarms
- Temp readings to nearest 0.1° F
- Fits standard 2-1/8" (55 mm) diameter hole

**#47-94**



**LST-3800**

## LDT-3200 Digital Temp

Precise, sensitive water surface temp digital readings in an attractive, compact case.

- High-contrast dot matrix display with advanced white LED backlighting
- Temp readings to nearest 0.1° F
- Temp sensor included
- Fits standard 2-1/8" (55 mm) diameter hole

**#7-28**



**LDT-3200**



# Performance Transducers

Lowrance offers a wide range of super-sensitive transducers to suit your sonar, your boat, your fishing style, and especially, your expectations for superior shallow and deep-water performance.

## Skimmer® Transducers – Better By Design

Thanks to its patented, streamlined design, high-speed Skimmer® transom-mount transducers slice smoothly through water without sonar-interfering bubbles. So you enjoy ideal sounding performance and cleanest sonar readings, even at speeds up to 70 mph/61 kts. Ideal for aluminum- and steel-hull outboard and stern-drive (I/O) boats, each Skimmer® includes a built-in sensor for water temp readings. Plus, the special “kick-up” bracket helps prevent accidental strike damage.

### 200 kHz Skimmer® Transom-Mount

The choice for inland freshwater and in-shore coastal saltwater angling. Built-in temp sensor and up to 60° of wide fish detection coverage at high sensitivity settings. Also used for shoot-thru sounding (without temp readings) on solid fiberglass hulls with proper installation.



### 200 kHz Skimmer® Portable

For go-anywhere portability, and a handy option for IceMachine™ portables, with easy-mounting suction cup bracket. Built-in temp sensor and up to 60° sonar coverage. Not for high-speed use.



### 50/200 kHz Skimmer® Transom-Mount

For deeper salt water or downrigger tracking with built-in temp sensor. Up to 90° sonar coverage @50 kHz – and up to 40° @200 kHz – with high sensitivity settings. Not for shoot-thru-hull use.

**NEW OPTION!** Now available in a special model to transmit digital depth and temp to all displays connected to a NMEA 2000® network. See page 29.



## More Transducer Options

### Versatile 200 kHz Pod Transducers

Expanded underwater coverage with the versatility of trolling motor mount, or shoot-thru operation on solid fiberglass hulls. Contour curve top and slot for hose clamp simplifies motor-mounting. Available with or without built-in temp sensor, all deliver wider fish detection coverage with high sensitivity settings.



### Deeper-Sounding Thru-Hull Transducers

Lowrance also offers a wide selection of bolt-thru-hull transducers made for ultimate deep-sounding performance while reducing or eliminating drag. Choose from 50/200 kHz dual-frequency bronze transducers including high-power, multi-element models with optional high-speed fairing blocks, to a 200 kHz plastic flange-mount for steel or aluminum hulls.



## Greatly Magnify Your Transducer Performance!



### New Lowrance Broadband Sounder-1

Enjoy even greater underwater definition and deeper depths with your Lowrance transducer. See page 28.

# LCX-Series Specifications

## Sonar Detail

						
	<b>LCX-113c HD</b>	<b>LCX-38c HD</b>	<b>LCX-28c HD</b>	<b>LCX-112c</b>	<b>LCX-37c</b>	<b>LCX-27c</b>
<b>Display</b>	10.4" Diag. (26.4 cm) 16-bit color SolarMAX™ TFT	8.4" Diag. (21.3 cm) 16-bit color SolarMAX™ TFT	7" Diag. (17.8 cm) 16-bit color SolarMAX™ TFT	10.4" Diag. (26.4 cm) 16-bit color SolarMAX™ TFT	8.4" Diag. (21.3 cm) 16-bit color SolarMAX™ TFT	7" Diag. (17.8 cm) 16-bit color SolarMAX™ TFT
<b>Resolution</b>	600V x 800H (480,000 pixels) Super VGA	600V x 800H (480,000 pixels) Super VGA	480V x 640H (307,200 pixels) Full VGA	600V x 800H (480,000 pixels) Super VGA	600V x 800H (480,000 pixels) Super VGA	480V x 640H (307,200 pixels) Full VGA
<b>Backlighting</b>	Fluorescent Cold Cathode Screen - Keypad	Fluorescent Cold Cathode Screen - Keypad	Fluorescent Cold Cathode Screen - Keypad	Fluorescent Cold Cathode Screen - Keypad	Fluorescent Cold Cathode Screen - Keypad	Fluorescent Cold Cathode Screen - Keypad
<b>Power</b>	Up to 1,000 Watts RMS (8,000 Watts Peak-to-Peak)	Up to 1,000 Watts RMS (8,000 Watts Peak-to-Peak)	Up to 1,000 Watts RMS (8,000 Watts Peak-to-Peak)	Up to 1,000 Watts RMS (8,000 Watts Peak-to-Peak)	Up to 1,000 Watts RMS (8,000 Watts Peak-to-Peak)	Up to 1,000 Watts RMS (8,000 Watts Peak-to-Peak)
<b>Frequency</b>	200 kHz or 50/200 kHz	200 kHz or 50/200 kHz	200 kHz or 50/200 kHz	200 kHz or 50/200 kHz	200 kHz or 50/200 kHz	200 kHz or 50/200 kHz
<b>Depth</b>	To 3,000' (915 m) w/50 kHz	To 3,000' (915 m) w/50 kHz	To 3,000' (915 m) w/50 kHz	To 3,000' (915 m) w/50 kHz	To 3,000' (915 m) w/50 kHz	To 3,000' (915 m) w/50 kHz
<b>Water Temp</b>	Standard (w/select transducers)	Standard (w/select transducers)	Standard (w/select transducers)	Standard (w/select transducers)	Standard (w/select transducers)	Standard (w/select transducers)
<b>Key Features</b>	COLORLINE™, ASP™, Split- Screen Zoom, HyperScroll™, Digital Record, Ethernet, NMEA 2000®	COLORLINE™, ASP™, Split- Screen Zoom, HyperScroll™, Digital Record, Ethernet, NMEA 2000®	COLORLINE™, ASP™, Split- Screen Zoom, HyperScroll™, Digital Record, Ethernet, NMEA 2000®	COLORLINE™, ASP™, Split- Screen Zoom, HyperScroll™, Digital Record, Ethernet, NMEA 2000®	COLORLINE™, ASP™, Split- Screen Zoom, HyperScroll™, Digital Record, Ethernet, NMEA 2000®	COLORLINE™, ASP™, Split- Screen Zoom, HyperScroll™, Digital Record, Ethernet, NMEA 2000®
<b>Alarms</b>	Deep/Shallow/Fish/Zone	Deep/Shallow/Fish/Zone	Deep/Shallow/Fish/Zone	Deep/Shallow/Fish/Zone	Deep/Shallow/Fish/Zone	Deep/Shallow/Fish/Zone
<b>Speed/Distance</b>	Standard w/50/200 kHz Packs Only (Optional w/200 kHz)	Standard w/50/200 kHz Packs Only (Optional w/200 kHz)	Standard w/50/200 kHz Packs Only (Optional w/200 kHz)	Standard w/50/200 kHz Packs Only (Optional w/200 kHz)	Standard w/50/200 kHz Packs Only (Optional w/200 kHz)	Standard w/50/200 kHz Packs Only (Optional w/200 kHz)
<b>Case Size</b>	12.2" W (31 cm) 8.9" H (22.6 cm) 3.5" D (8.9 cm)	10.6" W (26.9 cm) 7.8" H (19.8 cm) 3.5" D (8.9 cm)	9.3" W (23.6 cm) 6.8" H (17.3 cm) 3.7" D (9.4 cm)	12.2" W (31 cm) 8.9" H (22.6 cm) 3.5" D (8.9 cm)	10.6" W (26.9 cm) 7.8" H (19.8 cm) 3.5" D (8.9 cm)	9.3" W (23.6 cm) 6.8" H (17.3 cm) 3.7" D (9.4 cm)

## GPS/Chartplotter Detail

	<b>LCX-113c HD</b>	<b>LCX-38c HD</b>	<b>LCX-28c HD</b>	<b>LCX-112c</b>	<b>LCX-37c</b>	<b>LCX-27c</b>
<b>Receiver</b>	12-Parallel Channel (GPS+WAAS)	12-Parallel Channel (GPS+WAAS)	12-Parallel Channel (GPS+WAAS)	12-Parallel Channel (GPS+WAAS)	12-Parallel Channel (GPS+WAAS)	12-Parallel Channel (GPS+WAAS)
<b>Antenna</b>	External LGC-3000 (GPS+WAAS)	External LGC-3000 (GPS+WAAS)	External LGC-3000 (GPS+WAAS)	External LGC-3000 (GPS+WAAS)	External LGC-3000 (GPS+WAAS)	External LGC-3000 (GPS+WAAS)
<b>Built-in Charts</b>	30GB Hard Drive: Preloaded high-detail NauticPath™ USA coastal, Fishing Hot Spots® Pro inland, & MapCreate™ USA Series 7	30GB Hard Drive: Preloaded high-detail NauticPath™ USA coastal, Fishing Hot Spots® Pro inland, & MapCreate™ USA Series 7	30GB Hard Drive: Preloaded high-detail NauticPath™ USA coastal, Fishing Hot Spots® Pro inland, & MapCreate™ USA Series 7	Newly-enhanced built-in U.S. background map with over 3,000 inland lakes with depth contours	Newly-enhanced built-in U.S. background map with over 3,000 inland lakes with depth contours	Newly-enhanced built-in U.S. background map with over 3,000 inland lakes with depth contours
<b>Chart Options</b>	Chartcard options: Lowrance FreedomMaps™, LakeMaster®, NauticPath™ International, and select Navionics®	Chartcard options: Lowrance FreedomMaps™, LakeMaster®, NauticPath™ International, and select Navionics®	Chartcard options: Lowrance FreedomMaps™, LakeMaster®, NauticPath™ International, and select Navionics®	Chartcard options: Lowrance FreedomMaps™, Fishing Hot Spots®, LakeMaster®, NauticPath™, USA & International, and select Navionics®	Chartcard options: Lowrance FreedomMaps™, Fishing Hot Spots®, LakeMaster®, NauticPath™, USA & International, and select Navionics®	Chartcard options: Lowrance FreedomMaps™, Fishing Hot Spots®, LakeMaster®, NauticPath™, USA & International, and select Navionics®
<b>Key Features</b>	2 slots for MMC/SD digital memory cards to record GPS trip details & sonar graphs, and to display plug-&-play electronic chart options; NMEA 2000®	2 slots for MMC/SD digital memory cards to record GPS trip details & sonar graphs, and to display plug-&-play electronic chart options; NMEA 2000®	2 slots for MMC/SD digital memory cards to record GPS trip details & sonar graphs, and to display plug-&-play electronic chart options; NMEA 2000®	2 slots for MMC/SD digital memory cards to record GPS trip details & sonar graphs, and to display plug-&-play electronic chart options; NMEA 2000®	2 slots for MMC/SD digital memory cards to record GPS trip details & sonar graphs, and to display plug-&-play electronic chart options; NMEA 2000®	2 slots for MMC/SD digital memory cards to record GPS trip details & sonar graphs, and to display plug-&-play electronic chart options; NMEA 2000®
<b>Position Points</b>	Up to 1,000 waypoints & 1,000 event markers	Up to 1,000 waypoints & 1,000 event markers	Up to 1,000 waypoints & 1,000 event markers	Up to 1,000 waypoints & 1,000 event markers	Up to 1,000 waypoints & 1,000 event markers	Up to 1,000 waypoints & 1,000 event markers
<b>Routes/Trails</b>	Up to 100 routes & 100 plot trails (10,000 points/trail)	Up to 100 routes & 100 plot trails (10,000 points/trail)	Up to 100 routes & 100 plot trails (10,000 points/trail)	Up to 100 routes & 100 plot trails (10,000 points/trail)	Up to 100 routes & 100 plot trails (10,000 points/trail)	Up to 100 routes & 100 plot trails (10,000 points/trail)
<b>Graphic Icons</b>	63 Icons	63 Icons	63 Icons	63 Icons	63 Icons	63 Icons
<b>Zoom</b>	37 ranges (0.05-4,000 mi)	37 ranges (0.05-4,000 mi)	37 ranges (0.05-4,000 mi)	37 ranges (0.05-4,000 mi)	37 ranges (0.05-4,000 mi)	37 ranges (0.05-4,000 mi)



# LMS- & M-Series Specifications

## Sonar Detail



**LMS-520c**



**LMS-522c iGPS**



**LMS-525c DF**



**LMS-527c DF iGPS**



**M68c s/MAP**

	<b>LMS-520c</b>	<b>LMS-522c iGPS</b>	<b>LMS-525c DF</b>	<b>LMS-527c DF iGPS</b>	<b>M68c s/MAP</b>
<b>Display</b>	5" Diag. (12.7 cm) 16-bit color SolarMAX™ TFT	5" Diag. (12.7 cm) 16-bit color SolarMAX™ TFT	5" Diag. (12.7 cm) 16-bit color SolarMAX™ TFT	5" Diag. (12.7 cm) 16-bit color SolarMAX™ TFT	3.5" Diag. (8.9 cm) 256-color Active Matrix TFT
<b>Resolution</b>	480V x 480H (230,400 pixels)	480V x 480H (230,400 pixels)	480V x 480H (230,400 pixels)	480V x 480H (230,400 pixels)	320V x 240H (76,800 pixels)
<b>Backlighting</b>	Fluorescent Cold Cathode Screen - Keypad	Fluorescent Cold Cathode Screen - Keypad	Fluorescent Cold Cathode Screen - Keypad	Fluorescent Cold Cathode Screen - Keypad	White LED Screen - Keypad
<b>Power</b>	2,400 Watts Peak-to-Peak (300 Watts RMS)	2,400 Watts Peak-to-Peak (300 Watts RMS)	4,000 Watts Peak-to-Peak (500 Watts RMS)	4,000 Watts Peak-to-Peak (500 Watts RMS)	800 Watts Peak-to-Peak (100 Watts RMS)
<b>Frequency</b>	200 kHz	200 kHz	50/200 kHz	50/200 kHz	200 kHz (Freshwater or Saltwater Packs)
<b>Depth</b>	To 900' (274 m) w/200 kHz	To 900' (274 m) w/200 kHz	To 2,500' (762 m) w/50 kHz	To 2,500' (762 m) w/50 kHz	To 600' (183 m) Freshwater; To 800' (244 m) Saltwater Pack
<b>Water Temp</b>	Standard (w/select transducers)	Standard (w/select transducers)	Standard (w/select transducers)	Standard (w/select transducers)	Standard (w/select transducers)
<b>Key Features</b>	COLORLINE™, ASP™, Split-Screen Zoom, HyperScroll™, Digital Record, Ethernet, NMEA 2000®	COLORLINE™, ASP™, Split-Screen Zoom, HyperScroll™, Digital Record, Ethernet, NMEA 2000®	COLORLINE™, ASP™, Split-Screen Zoom, HyperScroll™, Digital Record, Ethernet, NMEA 2000®	COLORLINE™, ASP™, Split-Screen Zoom, HyperScroll™, Digital Record, Ethernet, NMEA 2000®	COLORLINE™, ASP™, Split-Screen Zoom, HyperScroll™
<b>Alarms</b>	Deep/Shallow/Fish/Zone	Deep/Shallow/Fish/Zone	Deep/Shallow/Fish/Zone	Deep/Shallow/Fish/Zone	Deep/Shallow/Fish
<b>Speed/Distance</b>	Optional	Optional	Standard (w/select transducers)	Standard (w/select transducers)	Optional
<b>Case Size</b>	6.9" W (17.6 cm) 5.4" H (13.8 cm) 3.4" D (8.6 cm)	6.9" W (17.6 cm) 5.4" H (13.8 cm) 3.4" D (8.6 cm)	6.9" W (17.6 cm) 5.4" H (13.8 cm) 3.4" D (8.6 cm)	6.9" W (17.6 cm) 5.4" H (13.8 cm) 3.4" D (8.6 cm)	4.3" W (10.8 cm) 5.8" H (14.7 cm) 2.5" D (6.4 cm)

## GPS/Chartplotter Detail

**LMS-520c**

**LMS-522c iGPS**

**LMS-525c DF**

**LMS-527c DF iGPS**

**M68c s/MAP**

	<b>LMS-520c</b>	<b>LMS-522c iGPS</b>	<b>LMS-525c DF</b>	<b>LMS-527c DF iGPS</b>	<b>M68c s/MAP</b>
<b>Receiver</b>	12-Parallel Channel (GPS+WAAS)	12-Parallel Channel (GPS+WAAS)	12-Parallel Channel (GPS+WAAS)	12-Parallel Channel (GPS+WAAS)	12-Parallel Channel (GPS+WAAS)
<b>Antenna</b>	External LGC-3000 (GPS+WAAS)	Internal GPS+WAAS Antenna	External LGC-3000 (GPS+WAAS)	Internal GPS+WAAS Antenna	Internal GPS+WAAS Antenna
<b>Built-in Charts</b>	Newly-enhanced built-in U.S. background map with over 3,000 inland lakes with depth contours	Newly-enhanced built-in U.S. background map with over 3,000 inland lakes with depth contours	Newly-enhanced built-in U.S. background map with over 3,000 inland lakes with depth contours	Newly-enhanced built-in U.S. background map with over 3,000 inland lakes with depth contours	Higher-detail, 64MB built-in U.S. background map with lakes and coastal waters with nav aids
<b>Chart Options</b>	Chartcard options: Lowrance FreedomMaps™ Fishing Hot Spots®, LakeMaster™, NauticPath™, USA & International, and select Navionics®	Chartcard options: Lowrance FreedomMaps™ Fishing Hot Spots®, LakeMaster™, NauticPath™, USA & International, and select Navionics®	Chartcard options: Lowrance FreedomMaps™ Fishing Hot Spots®, LakeMaster™, NauticPath™, USA & International, and select Navionics®	Chartcard options: Lowrance FreedomMaps™ Fishing Hot Spots®, LakeMaster™, NauticPath™, USA & International, and select Navionics®	None
<b>Key Features</b>	1 slot for MMC/SD digital memory cards to record GPS trip details & sonar graphs, and to display plug-& play electronic chart options; NMEA 2000®	1 slot for MMC/SD digital memory cards to record GPS trip details & sonar graphs, and to display plug-& play electronic chart options; NMEA 2000®	1 slot for MMC/SD digital memory cards to record GPS trip details & sonar graphs, and to display plug-& play electronic chart options; NMEA 2000®	1 slot for MMC/SD digital memory cards to record GPS trip details & sonar graphs, and to display plug-& play electronic chart options; NMEA 2000®	Precision GPS with incredible visibility in direct sunlight; compact case design
<b>Position Points</b>	Up to 1,000 waypoints & 1,000 event markers	Up to 1,000 waypoints & 1,000 event markers	Up to 1,000 waypoints & 1,000 event markers	Up to 1,000 waypoints & 1,000 event markers	Up to 1,000 waypoints & 1,000 event markers
<b>Routes/Trails</b>	Up to 100 routes & 100 plot trails (10,000 points/trail)	Up to 100 routes & 100 plot trails (10,000 points/trail)	Up to 100 routes & 100 plot trails (10,000 points/trail)	Up to 100 routes & 100 plot trails (10,000 points/trail)	Up to 100 routes & 100 plot trails (10,000 points/trail)
<b>Graphic Icons</b>	42 Different Icons	42 Different Icons	42 Different Icons	42 Different Icons	42 Different Icons
<b>Zoom</b>	40 ranges (0.02-4,000 mi)	40 ranges (0.02-4,000 mi)	40 ranges (0.02-4,000 mi)	40 ranges (0.02-4,000 mi)	40 ranges (0.02-4,000 mi)

# X-Series Specifications








## Sonar Detail

											
<b>Display</b>	5" Diag. (12.7 cm) 16-bit color SolarMAX™ TFT	5" Diag. (12.7 cm) 16-bit color SolarMAX™ TFT	5" Diag. (12.7 cm) Film SuperTwist	5" Diag. (12.7 cm) Film SuperTwist	5" Diag. (12.7 cm) Film SuperTwist	5" Diag. (12.7 cm) Film SuperTwist	5" Diag. (12.7 cm) Film SuperTwist	4" Diag. (10.2 cm) Film SuperTwist	3.5" Diag. (8.9 cm) 256-color Active Matrix TFT	4" Diag. (10.2 cm) Film SuperTwist	4" Diag. (10.2 cm) Film SuperTwist
<b>Resolution</b>	480V x 480H (230,400 pixels)	480V x 480H (230,400 pixels)	480V x 480H (230,400 pixels)	480V x 480H (230,400 pixels)	480V x 480H (230,400 pixels)	480V x 480H (230,400 pixels)	320V x 320H (102,400 pixels)	240V x 160H (38,400 pixels)	320V x 240H (102,400 pixels)	240V x 160H (38,400 pixels)	240V x 160H (38,400 pixels)
<b>Backlighting</b>	Fluorescent Cold Cathode Screen - Keypad	Fluorescent Cold Cathode Screen - Keypad	White LED Screen - Keypad	White LED Screen - Keypad	Amber LED Screen - Keypad	Amber LED Screen - Keypad	Incandescent Screen - Keypad	Incandescent Screen - Keypad	White LED Screen - Keypad	White LED Screen - Keypad	White LED Screen - Keypad
<b>Power</b>	2,400 Watts Peak-to-Peak (300 Watts RMS)	4,000 Watts Peak-to-Peak (500 Watts RMS)	4,000 Watts Peak-to-Peak (500 Watts RMS)	4,000 Watts Peak-to-Peak (500 Watts RMS)	2,400 Watts Peak-to-Peak (300 Watts RMS)	4,000 Watts Peak-to-Peak (500 Watts RMS)	1,500 Watts Peak-to-Peak (188 Watts RMS)	1,500 Watts Peak-to-Peak (188 Watts RMS)	800 Watts Peak-to-Peak (100 Watts RMS)	1,500 Watts Peak-to-Peak (188 Watts RMS)	2,400 Watts Peak-to-Peak (300 Watts RMS)
<b>Frequency</b>	200 kHz	50/200 kHz	200 kHz	50/200 kHz	200 kHz	50/200 kHz	200 kHz	83/200 kHz (Dual-Search)	200 kHz (Freshwater or Saltwater Packs)	200 kHz	50/200 kHz
<b>Depth</b>	To 900' (274 m) w/200 kHz	To 2,500' (762 m) w/50 kHz	To 1,000' (305 m) w/200 kHz	To 2,500' (762 m) w/50 kHz	To 900' (274 m) w/200 kHz	To 1,700' (518 m) w/50 kHz	To 800' (244 m) w/200 kHz	To 1,000' (305 m) w/83 kHz	To 600' (183 m) w/200 kHz	To 600' (183 m) w/200 kHz	To 1,500' (457 m) w/50 kHz
<b>Water Temp</b>	Standard (w/select transducers)	Standard (w/select transducers)	Standard (w/select transducers)	Standard (w/select transducers)	Standard (w/select transducers)	Standard (w/select transducers)	Standard (w/select transducers)	Standard (w/select transducers)	Standard (w/select transducers)	Standard (w/select transducers)	Standard (w/select transducers)
<b>Key Features</b>	COLORLINE™, ASP™, Split-Screen Zoom, HyperScroll™, Ethernet, NMEA 2000®	COLORLINE™, ASP™, Split-Screen Zoom, HyperScroll™, Ethernet, NMEA 2000®	GRAYLINE™, ASP™, Split-Screen Zoom, HyperScroll™, FishReveal™, NMEA 2000®	GRAYLINE™, ASP™, Split-Screen Zoom, HyperScroll™, FishReveal™, NMEA 2000®	GRAYLINE™, ASP™, Split-Screen Zoom, HyperScroll™, FishReveal™	GRAYLINE™, ASP™, Split-Screen Zoom, HyperScroll™, FishReveal™	GRAYLINE™, ASP™, Split-Screen Zoom, HyperScroll™, FishReveal™	GRAYLINE™, ASP™, Split-Screen Zoom, HyperScroll™, FishReveal™	GRAYLINE™, ASP™, Split-Screen Zoom, HyperScroll™	GRAYLINE™, ASP™, Split-Screen Zoom, HyperScroll™, FishReveal™, NMEA 2000®	GRAYLINE™, ASP™, Split-Screen Zoom, HyperScroll™, FishReveal™, NMEA 2000®
<b>Alarms</b>	Deep/Shallow/Fish/Zone	Deep/Shallow/Fish/Zone	Deep/Shallow/Fish/Zone	Deep/Shallow/Fish/Zone	Deep/Shallow/Fish/Zone	Deep/Shallow/Fish/Zone	Deep/Shallow/Fish	Deep/Shallow/Fish	Deep/Shallow/Fish	Deep/Shallow/Fish	Deep/Shallow/Fish
<b>Speed/Distance</b>	Optional	Standard (with select transducers)	Optional	Standard (with select transducers)	Optional	Standard (with select transducers)	Optional	None	Optional	Optional	Standard (w/select transducers)
<b>Case Size</b>	6.9" W (17.6 cm) 5.4" H (13.8 cm) 3.4" D (8.6 cm)	6.9" W (17.6 cm) 5.4" H (13.8 cm) 3.4" D (8.6 cm)	6.9" W (17.6 cm) 5.4" H (13.8 cm) 3.4" D (8.6 cm)	6.9" W (17.6 cm) 5.4" H (13.8 cm) 3.4" D (8.6 cm)	6.9" W (17.6 cm) 5.4" H (13.8 cm) 3.4" D (8.6 cm)	6.9" W (17.6 cm) 5.4" H (13.8 cm) 3.4" D (8.6 cm)	6.9" W (17.6 cm) 5.4" H (13.8 cm) 3.4" D (8.6 cm)	4.3" W (10.8 cm) 5.8" H (14.7 cm) 2.5" D (6.4 cm)	4.3" W (10.8 cm) 5.8" H (14.7 cm) 2.5" D (6.4 cm)	5.4" W (13.6 cm) 5.2" H (13.2 cm) 2.6" D (6.6 cm)	5.4" W (13.6 cm) 5.2" H (13.2 cm) 2.6" D (6.6 cm)



# GlobalMap® Specifications

## GPS/Chartplotter Detail

	 GlobalMap® 9200c	 GlobalMap® 8200c	 GlobalMap® 7200c	 GlobalMap® 5200c	 GlobalMap® 5300c iGPS	 GlobalMap® Baja 840c	 GlobalMap® Baja 540c
<b>Receiver</b>	12-Parallel Channel (GPS+WAAS)	12-Parallel Channel (GPS+WAAS)	12-Parallel Channel (GPS+WAAS)	12-Parallel Channel (GPS+WAAS)	12-Parallel Channel (GPS+WAAS)	12-Parallel Channel (GPS+WAAS)	12-Parallel Channel (GPS+WAAS)
<b>Display</b>	10.4" Diag. (26.4cm) 16-bit color TFT Super VGA 600V x 800H Pixels	8.4" Diag. (21.3 cm) 16-bit color TFT Super VGA 600V x 800H Pixels	7" Diag. (17.8 cm) 16-bit color TFT Full VGA 480V x 640H Pixels	5" Diag. (12.7 cm) 16-bit color TFT 480V x 480H Pixels	5" Diag. (12.7 cm) 16-bit color TFT 480V x 480H Pixels	8.4" Diag. (21.3 cm) 16-bit color TFT Super VGA 600V x 800H Pixels	5" Diag. (12.7 cm) 16-bit color TFT 480V x 480H Pixels
<b>Antenna</b>	External LGC-3000 (GPS+WAAS)	External LGC-3000 (GPS+WAAS)	External LGC-3000 (GPS+WAAS)	External LGC-3000 (GPS+WAAS)	Internal GPA+WAAS Antenna	External LGC-Baja (GPS+WAAS)	External LGC-Baja (GPS+WAAS)
<b>Built-in Charts</b>	Newly-enhanced built-in U.S. background map with over 3,000 inland lakes with depth contours	Newly-enhanced built-in U.S. background map with over 3,000 inland lakes with depth contours	Newly-enhanced built-in U.S. background map with over 3,000 inland lakes with depth contours	Newly-enhanced built-in U.S. background map with over 3,000 inland lakes with depth contours	Newly-enhanced built-in U.S. background map with over 3,000 inland lakes with depth contours	Newly-enhanced built-in U.S. background map with over 3,000 inland lakes with depth contours	Newly-enhanced built-in U.S. background map with over 3,000 inland lakes with depth contours
<b>Chart Options</b>	Chartcard options: Lowrance FreedomMaps™, Fishing Hot Spots®, LakeMaster®, NauticPath™, USA & International, and select Navionics®	Chartcard options: Lowrance FreedomMaps™, Fishing Hot Spots®, LakeMaster®, NauticPath™, USA & International, and select Navionics®	Chartcard options: Lowrance FreedomMaps™, Fishing Hot Spots®, LakeMaster®, NauticPath™, USA & International, and select Navionics®	Chartcard options: Lowrance FreedomMaps™, Fishing Hot Spots®, LakeMaster®, NauticPath™, USA & International, and select Navionics®	Chartcard options: Lowrance FreedomMaps™, Fishing Hot Spots®, LakeMaster®, NauticPath™, USA & International, and select Navionics®	Chartcard options: Lowrance FreedomMaps™, Fishing Hot Spots®, LakeMaster®, NauticPath™, USA & International, and select Navionics®	Chartcard options: Lowrance FreedomMaps™, Fishing Hot Spots®, LakeMaster®, NauticPath™, USA & International, and select Navionics®
<b>Key Features</b>	2 slots for MMC/SD digital memory cards to record GPS trip details, and to display plug-&-play electronic chart options; Ethernet and NMEA 2000®	2 slots for MMC/SD digital memory cards to record GPS trip details, and to display plug-&-play electronic chart options; Ethernet and NMEA 2000®	2 slots for MMC/SD digital memory cards to record GPS trip details, and to display plug-&-play electronic chart options; Ethernet and NMEA 2000®	2 slots for MMC/SD digital memory cards to record GPS trip details, and to display plug-&-play electronic chart options; Ethernet and NMEA 2000®	1 slot for MMC/SD digital memory cards to record GPS trip details, and to display plug-&-play electronic chart options; Ethernet and NMEA 2000®	2 slots for MMC/SD digital memory cards to record GPS trip details, and to display plug-&-play electronic chart options; Ethernet and NMEA 2000®	1 slot for MMC/SD digital memory cards to record GPS trip details, and to display plug-&-play electronic chart options; Ethernet and NMEA 2000®
<b>Position Points</b>	Up to 1,000 waypoints & 1,000 event markers	Up to 1,000 waypoints & 1,000 event markers	Up to 1,000 waypoints & 1,000 event markers	Up to 1,000 waypoints & 1,000 event markers	Up to 1,000 waypoints & 1,000 event markers	Up to 1,000 waypoints & 1,000 event markers	Up to 1,000 waypoints & 1,000 event markers
<b>Routes/Trails</b>	Up to 100 routes & 100 plot trails (10,000 points/trail)	Up to 100 routes & 100 plot trails (10,000 points/trail)	Up to 100 routes & 100 plot trails (10,000 points/trail)	Up to 100 routes & 100 plot trails (10,000 points/trail)	Up to 100 routes & 100 plot trails (10,000 points/trail)	Up to 100 routes & 100 plot trails (10,000 points/trail)	Up to 100 routes & 100 plot trails (10,000 points/trail)
<b>Zoom</b>	37 ranges (0.05-4,000 mi)	37 ranges (0.05-4,000 mi)	37 ranges (0.05-4,000 mi)	40 ranges (0.02-4,000 mi)	40 ranges (0.02-4,000 mi)	37 ranges (0.05-4,000 mi)	40 ranges (0.02-4,000 mi)

## iFINDER® Handheld GPS Specifications

	 iFINDER® HUNT c	 iFINDER® HUNT	 iFINDER® EXPEDITION c	 iFINDER® H20 c	 iFINDER® H20	 iFINDER® GO2
<b>Receiver</b>	16-channel GPS+WAAS	12-channel GPS+WAAS	16-channel GPS+WAAS	16-channel GPS+WAAS	12-channel GPS+WAAS	16-channel GPS+WAAS
<b>Display</b>	2.83" Diag. (7.2 cm) 256-color TFT 320V x 240H pixel white LED backlight	3" Diag. (7.6 cm) Film SuperTwist 240V x 180H pixel white LED backlight	2.83" Diag. (7.2 cm) 256-color TFT 320V x 240H pixel white LED backlight	2.83" Diag. (7.2 cm) 256-color TFT 320V x 240H pixel white LED backlight	3" Diag. (7.6 cm) Film SuperTwist 240V x 180H pixel white LED backlight	2" Diag. (5 cm) Film SuperTwist 200V x 140H pixel amber LED backlight
<b>Background Map</b>	Built-in enhanced USA with major cities/roads, Interstate exit service and marine nav aids	Built-in enhanced USA with major cities/roads, Interstate exit service and marine nav aids	Built-in enhanced USA with major cities/roads, Interstate exit service and marine nav aids	Built-in enhanced USA with major cities/roads, Interstate exit service and marine nav aids	Built-in enhanced USA with major cities/roads, Interstate exit service and marine nav aids	Built-in USA with major cities/roads, Interstate exit service, national parks and marine nav aids
<b>Chart Options</b>	MMC/SD memory card slot to display MapCreate™, FreedomMaps™, Fishing Hot Spots®, LakeMaster®, NauticPath™ and Navionics®	MMC/SD memory card slot to display MapCreate™, FreedomMaps™, Fishing Hot Spots®, LakeMaster®, NauticPath™ and Navionics®	MMC/SD memory card slot to display MapCreate™, FreedomMaps™, Fishing Hot Spots®, LakeMaster®, NauticPath™ and Navionics®	MMC/SD memory card slot to display MapCreate™, FreedomMaps™, Fishing Hot Spots®, LakeMaster®, NauticPath™ and Navionics®	MMC/SD memory card slot to display MapCreate™, FreedomMaps™, Fishing Hot Spots®, LakeMaster®, NauticPath™ and Navionics®	none
<b>Key Features</b>	Compass, Barometer, Hunt Mode, Scout Mode, MP3, Voice Notes, 10 languages, NMEA 0183, Back-up memory	Compass, Barometer, Hunt Mode, Scout Mode, MP3, Voice Notes, 10 languages, NMEA 0183, Back-up memory	Compass, Barometer, Hunt Mode, Scout Mode, MP3, Voice Notes, 10 languages, NMEA 0183, Back-up memory	10 languages, NMEA 0183, Back-up memory	10 languages, NMEA 0183, Back-up memory	10 languages, NMEA 0183, Back-up memory
<b>Position Points</b>	Up to 2,000 waypoints & 1,000 event markers	Up to 2,000 waypoints & 1,000 event markers	Up to 1,000 waypoints & 1,000 event markers	Up to 1,000 waypoints & 1,000 event markers	Up to 1,000 waypoints & 1,000 event markers	Up to 1,000 waypoints & 1,000 event markers
<b>Routes/Trails</b>	Up to 100 routes & 100 plot trails (10,000 points/trail)	Up to 100 routes & 100 plot trails (10,000 points/trail)	Up to 100 routes & 100 plot trails (10,000 points/trail)	Up to 100 routes & 100 plot trails (10,000 points/trail)	Up to 100 routes & 100 plot trails (10,000 points/trail)	Up to 100 routes & 100 plot trails (10,000 points/trail)
<b>Graphic Icons</b>	63, + 17 exclusive hunting icons	42, + 17 exclusive hunting icons	63	63	42	42
<b>Zoom</b>	40 ranges, .02-4,000 miles	40 ranges, .02-4,000 miles	40 ranges, .02-4,000 miles	40 ranges, .02-4,000 miles	40 ranges, .02-4,000 miles	40 ranges, .02-4,000 miles
<b>Case Size</b>	2.5" W (6.4 cm) 5.6" H (14.2 cm) 1.2" D (3 cm)	2.5" W (6.4 cm) 5.6" H (14.2 cm) 1.2" D (3 cm)	2.5" W (6.4 cm) 5.6" H (14.2 cm) 1.2" D (3 cm)	2.5" W (6.4 cm) 5.6" H (14.2 cm) 1.2" D (3 cm)	2.5" W (6.4 cm) 5.6" H (14.2 cm) 1.2" D (3 cm)	2.12" W (5.4 cm) 5.15" H (13.1 cm) 1.24" D (3.15 cm)
<b>Input Power</b>	3 vDC (2 AAAs) or 5-35 vDC accessory power cable	3 vDC (2 AAAs) or 5-35 vDC accessory power cable	3 vDC (2 AAAs) or 5-35 vDC accessory power cable	3 vDC (2 AAAs) or 5-35 vDC accessory power cable	3 vDC (2 AAAs) or 5-35 vDC accessory power cable	3 vDC (2 AAAs) or 5-35 vDC accessory power cable
<b>Battery Life (w/1-second updates)</b>	Up to 16 hours	Up to 12 hours	Up to 14 hours	Up to 14 hours	Up to 12 hours	Up to 50 hours
<b>Weight (w/batteries)</b>	8.7 oz (247 g)	8.7 oz (247 g)	8.7 oz (247 g)	8.7 oz (247 g)	8.7 oz (247 g)	5.36 oz (152 g)

# VHF Specifications



**LVR-880**



**LVR-250**



**LHR-20/22**

<b>Dimensions (HWD)/Weight</b> without bracket, microphone or antenna	3.8" x 7.1" x 6.1 " 96 x 180 x 156 mm 3.7 lbs (1.66 kg)	2.8" x 6.3" x 6.1 " 72 x 160 x 156 mm 2.8 lbs (1.29 kg)	5.35" x 2.28" x 1.20" 136 x 58 x 30.5 mm 0.62 lbs (0.28 kg) with battery
<b>LCD Display (HW)</b>	Backlighted FSTN 1.3" x 2.6"; 33 x 71mm Full bitmapped (64 x 128)	Backlighted FSTN 1.0" x 1.8"; 26 x 46 mm 4 line x 12 Character + Icons	Backlighted FSTN 0.8" x 1.4"; 20 x 35 mm Custom Digits + Icons
<b>Channel Bank (country specific) and Select Operation</b>	All USA, International, Canada, 10 NOAA Weather, ATIS – Rotary Control	All USA, International, Canada, 10 NOAA Weather, ATIS – Rotary Control	All USA, International, Canada, 10 NOAA Weather – Up/Down Control
<b>Hand Microphone Features</b>	PTT button, Hi/Lo, WX, CH16/9, 3CH, channel up/down, built-in speaker and backlighting	PTT button, Hi/Lo, WX, CH16/9, 3CH, channel up/down, built-in speaker and backlighting	—
<b>Power Supply/Battery Life</b>	13.8 vDC±15%	13.8 vDC±15%	7.4 v – 1600 mAh Li-Ion >10 hr (5W 5%, 5%, 90% ratio) >13 hr (1W 5%, 5%, 90% ratio) With battery level indicator
<b>Audio Output Power</b>	2W - 8Ω @ 10% distortion 94dBA internal speaker 4W - 4Ω @ 10% distortion with external speaker	2W - 8Ω @ 10% distortion 89dBA internal speaker 4W - 4Ω @ 10% distortion with external speaker	250mW internal speaker
<b>Digital Selective Calling - DSC</b>	SC-101 US; Class D EU	SC-101 US; Class D EU	—
<b>DSC Call Types</b>	All calls are available - including high resolution position polling and Track-Your-Buddy®	All calls are available - including high resolution position polling	—
<b>Directory/MMSI Entry (country specific)</b>	20 Individual + Group MMSI + User MMSI + ATIS MMSI	20 Individual + Group MMSI + User MMSI + ATIS MMSI	—
<b>Call Logs</b>	20 Individual/10 Distress	20 Individual/10 Distress	—
<b>GPS Input + Output</b>	NMEA 0183/NMEA 2000®	NMEA 0183	—
<b>Hailer with Intercom Talkback/ External Speaker</b>	Powerful 22W Hailer with auto/ manual sounds and listen-back, plus external speaker jack	No Hailer - has external speaker jack	—
<b>Navigation with Waypoints and MOB</b>	200 Waypoints with instant GO control	—	—
<b>FM Stereo Radio</b>	USA/EU/AUS bands	—	—
<b>S.A.M.E. Weather Alert</b>	County-by-County warnings	—	—
<b>Local/Distance</b>	✓	✓	—
<b>3 Favorite Channel Select/Scan</b>	✓	✓	Memory CH select/Priority scan
<b>12db Sinad Sensitivity</b>	.25uV (distant)/2.5uV (local)	.25uV (distant)/2.5uV (local)	.25uV
<b>Other Standard Features</b>	Flush mount kit and sun cover included. Memory upgrades via NMEA 2000®. EU model is Country programmable.	Flush mount kit and sun cover included. EU model is Country programmable.	4 bar signal strength meter. LHR-22 has RealTree ADVANTAGE MAX-4 HD® camo pattern and includes a camo AA tray.

## All VHF's share the following:

TX Power: 25W/1W fixed, 5W/1W portable + indicators  
Current Drain: 6A at 25W/1.5A at 1W fixed mount  
Battery monitor: Yes – level indicator with LHR-20/22  
Compass safe distance: 0.45m – fixed mount  
Temperature Range: -4 to 122°F (-20 to 50°C)  
Waterproof Rating: JIS7  
Antenna Connector: SO-239; SMB – LHR-20/22  
Transmitter Protection: Open/Short circuit of antenna  
Modulation Distortion: <4% at 1kHz with ±3Khz deviation

Frequency Control: PLL with ±10ppm stability  
Max. frequency deviation: ±5Khz  
NOAA Tone Wx Alert: Yes  
All Scan/Dual watch/Tri watch/Memory Scan: Yes  
Residual Noise Level: More than -40 dB unscquelched  
Adjacent CH Selectivity: more than 65dB  
Spurious Response: more than 65dB  
Intermodulation Rejection Ratio: more than 65dB

# Radar Specifications



**LRA-1800**



**LRA-2000**



**LRA-2400**



**LRA-4000**



**LRA-5000**

Type	Radome	Radome	Radome	Open Array	Open Array
Size/Weight	18 in. (45 cm)/ 9 lbs. (4.2 kg)	24 in. (60 cm)/ 22 lbs. (10 kg)	24 in. (60 cm)/ 22 lbs. (10 kg)	4 ft. (1.2 m)	5 ft. (1.5 m)
Output Power	2 kW	4 kW	4 kW	4 kW	4 kW
Max. Range Scale	24 nm	36 nm	36 nm	48 nm	48 nm
Beamwidth (H/V)	5.2°/25°	4°/25°	4°/25°	2.4°/25°	1.7°/25°
Voltage Required	10.8 – 15.6 vDC	10.8 – 41.6 vDC	10.8 – 42 vDC	10.8 – 41.6 vDC	10.8 – 41.6 vDC
Rotation Speed	27 RPM	24 RPM	27 RPM	24 RPM	24 RPM



# LOWRANCE®

## About Navico

Navico is the parent company to seven well established marine electronics brands: B&G®, Eagle®, Lowrance®, MX Marine, Navman, Northstar and Simrad®. Navico has approximately 2,800 employees globally and 2006 pro forma revenues of close to USD 320 million. Navico is headquartered in Oslo, Norway. The company has development and manufacturing facilities in Tulsa, Oklahoma, Acton, Massachusetts, Torrance, California USA; Ensenada, Mexico; Egersund, Norway; Romsey, UK; and Auckland, New Zealand.



**NAVICO AMERICAS**  
Corporate Headquarters  
12000 East Skelly Drive  
Tulsa, OK 74128-2486 USA  
918.437.6881

Canada Service Center  
919 Matheson Blvd. East  
Mississauga, Ontario  
CANADA L4W 2R7  
905.629.1614

### For More Information

**Online:**

[www.lowrance.com](http://www.lowrance.com)

**Customer Service:**

800.324.1356 (continental USA)

800.661.3983 (Canada)

**Parts/Accessories:**

[www.lei-extras.com](http://www.lei-extras.com)

800.324.0045 (continental USA)

800.661.3983 (Canada)

# LOWRANCE®



988-0153-96 0308

[www.lowrance.com](http://www.lowrance.com)

A brand by Navico – Leader in Marine Electronics