

Transient Killer Whales of British Columbia and Southeast Alaska



Photo-Identification Catalogue 2008

Graeme M. Ellis, Jared R. Towers and John K.B. Ford

Pacific Biological Station, Nanaimo, British Columbia
© Fisheries and Oceans Canada 2008

Transient Killer Whales of British Columbia and Southeast Alaska

Photo-Identification Catalogue 2008

Graeme M. Ellis, Jared R. Towers and John K.B. Ford

Cetacean Research Program
Pacific Biological Station
Fisheries and Oceans Canada
3190 Hammond Bay Road
Nanaimo, British Columbia, V9T 6N7

© Fisheries and Oceans Canada 2008

Preface

This catalogue has been compiled and made available to facilitate whale identification by our research colleagues, whale-watch operators, and others interested in this killer whale population. Images in this catalogue are copyrighted and are not to be reproduced without permission of the authors. Also, data presented here are not to be cited without permission.

It should be noted that due to the long periods that may pass between encounters with certain individuals and groups, many of the birth years given here are conservative estimates and should be considered approximate.

This catalogue is also available in pdf format from:
http://www.pac.dfo-mpo.gc.ca/sci/sa/cetacean/default_e.htm

Observations and photographs of transient killer whales can be valuable for research. People are encouraged to send photos and details of encounters with transients to: marinemammals@dfo-mpo.gc.ca

Please observe the 'Be Whale Wise' guidelines when operating vessels around killer whales. These are available at:
<http://www.bewhalewise.org>

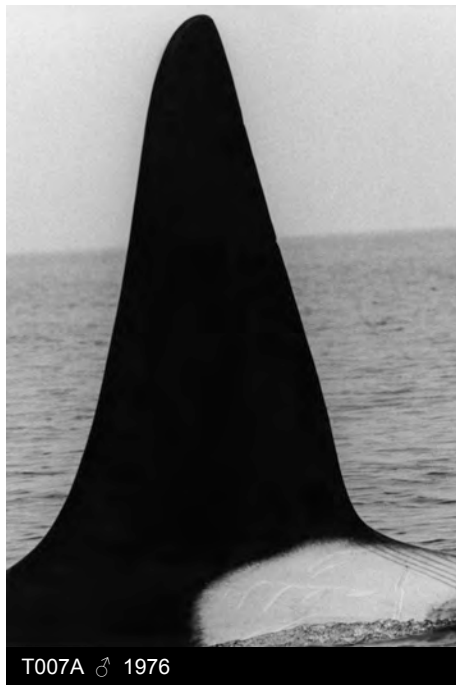
KEY

Name	T001
Sex (if known)	♀
Estimated or known birth year	2000

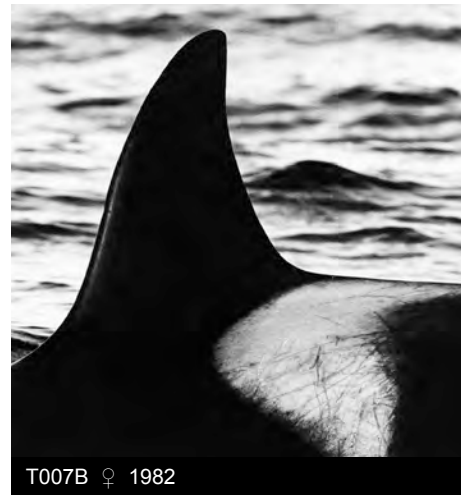




T007 ♀ ≤1961



T007A ♂ 1976



T007B ♀ 1982



T010 ♀ ≤1963

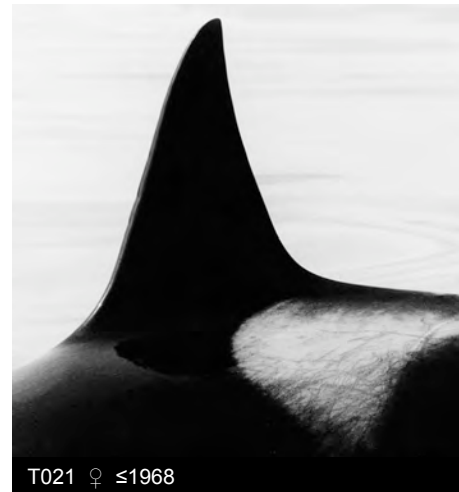


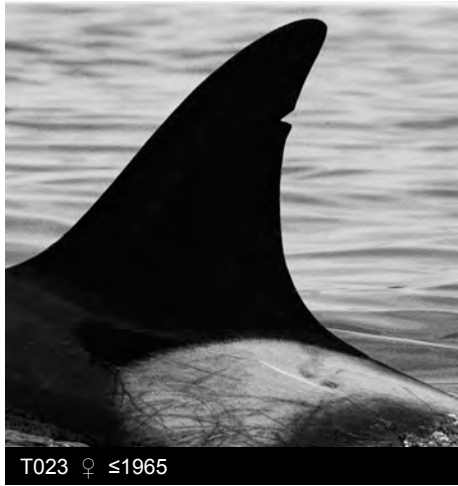
T010B ♂ 1983

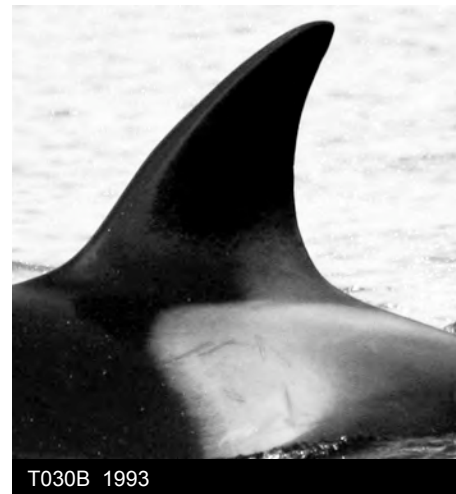
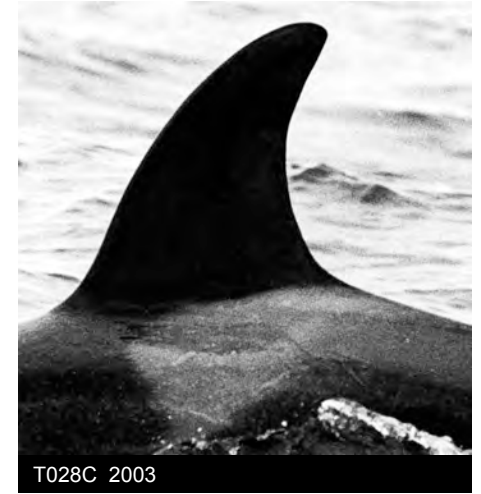
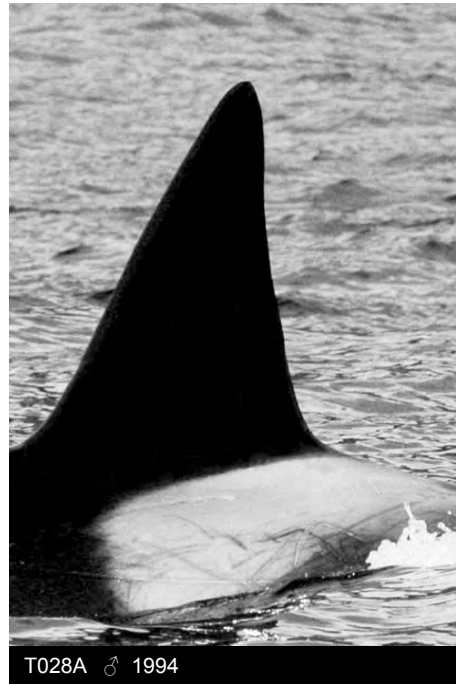


T010C 1999











T031 ♂ ≤1954



T034 ♀ ≤1970



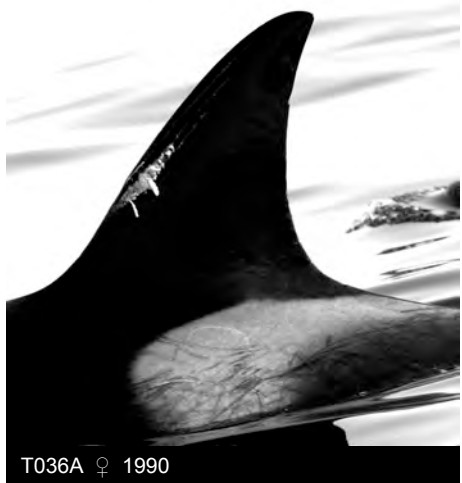
T034A 2007

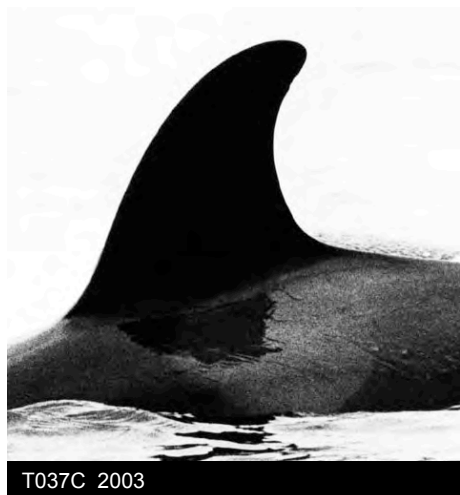
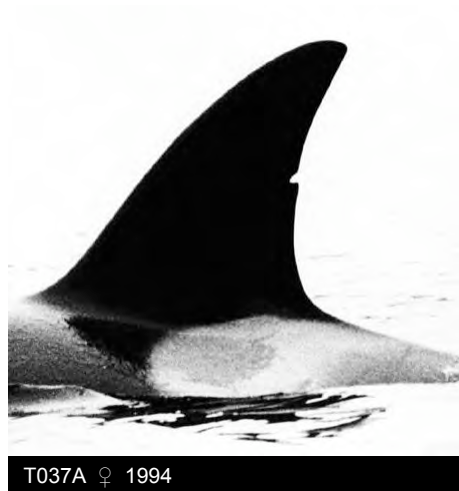
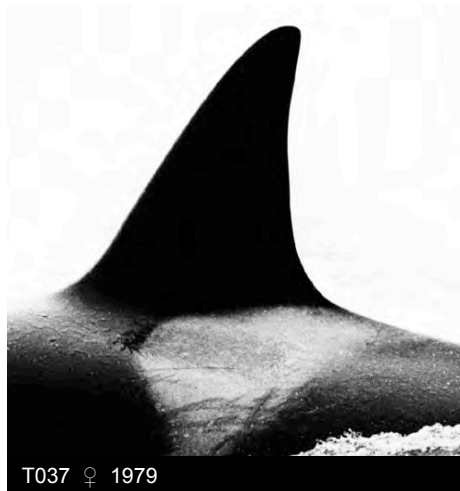


T035 ♀ ≤1970

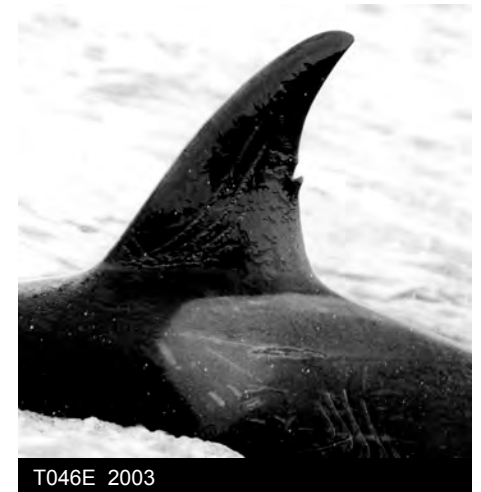


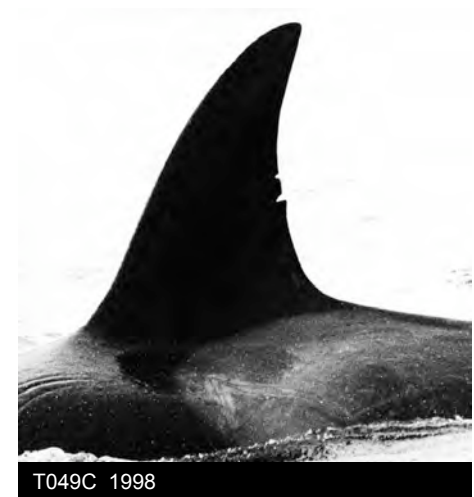
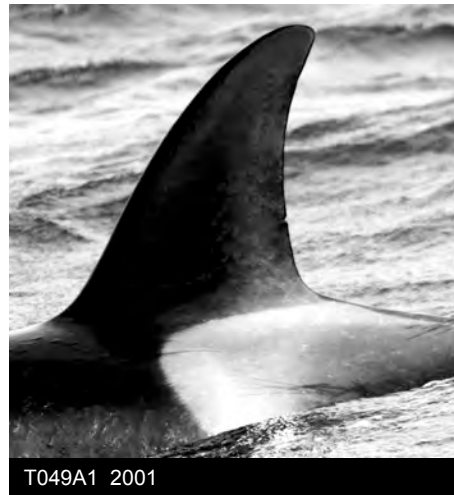
T035A 1998





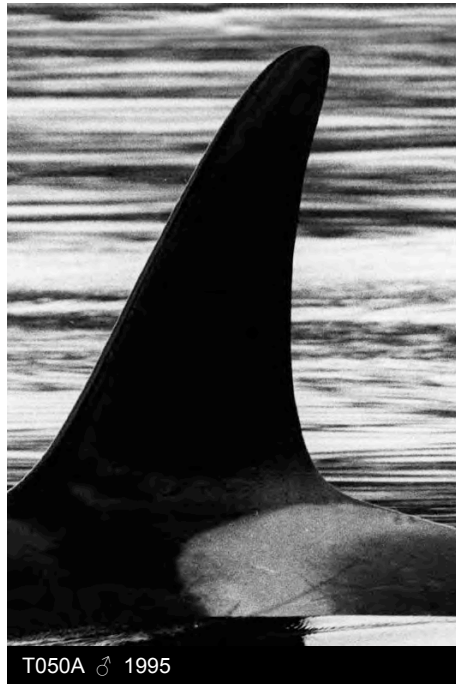








T050 ♀ 1980



T050A ♂ 1995



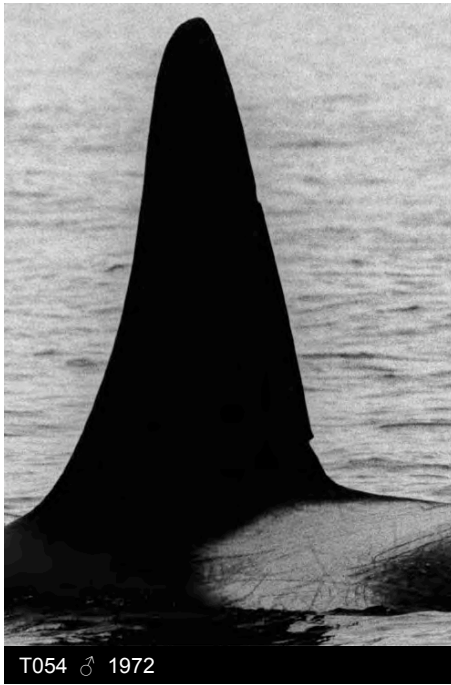
T050B 1999



T050C 2005



T051 ♂ 1981



T054 ♂ 1972



T055 ♀ ≤1974



T055A ♂ 1989



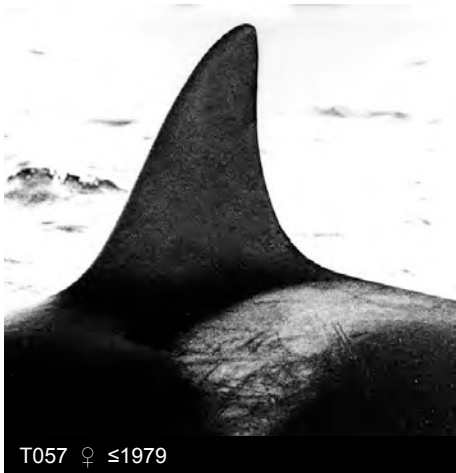
T055B 1994



T055C 2004



T056 ♂ 1982



T057 ♀ ≤1979



T057A 1993



T058 ♀ ≤1976



T059 ♀ ≤1977



T059A ♀ 1995



T059A1 2006



T060 ♀ ≤1980



T060C 2001

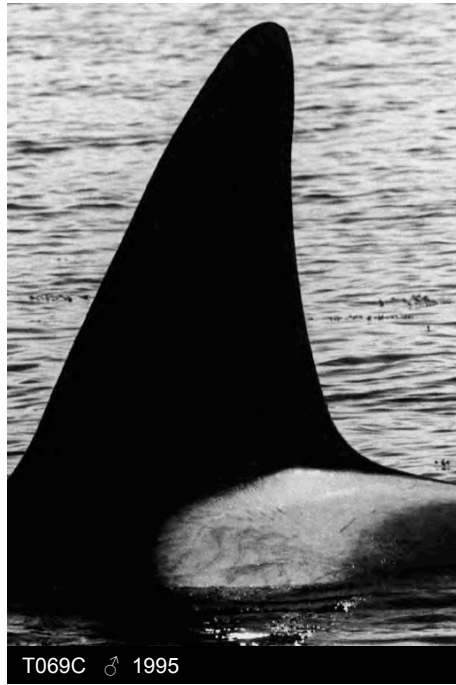


T060D 2004



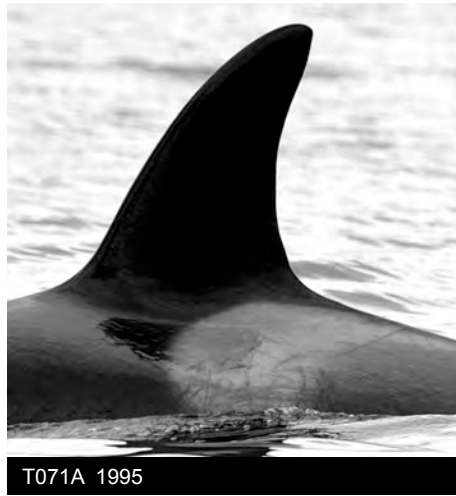








T071 ♀ 1980



T071A 1995



T071B 2001



T071C 2007



T072 ♂ 1974



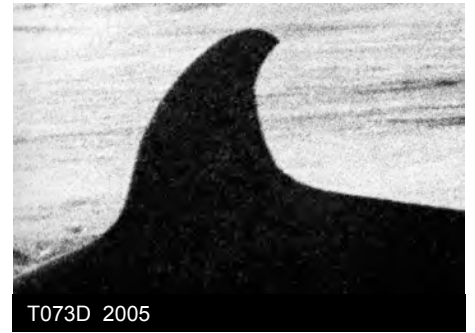
T073 ♀ ≤1972



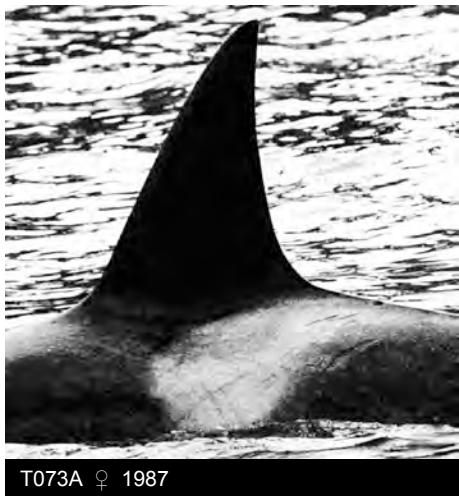
T073B ♂ 1991



T073C 1998



T073D 2005



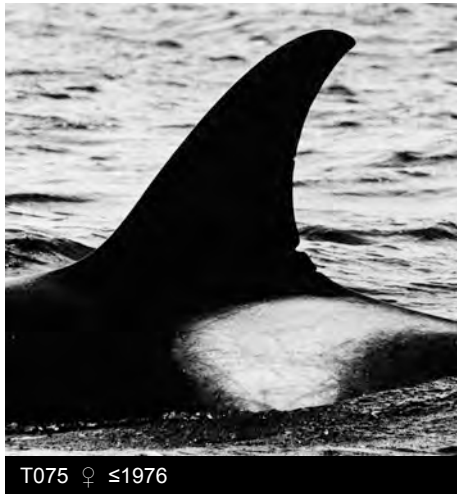
T073A ♀ 1987



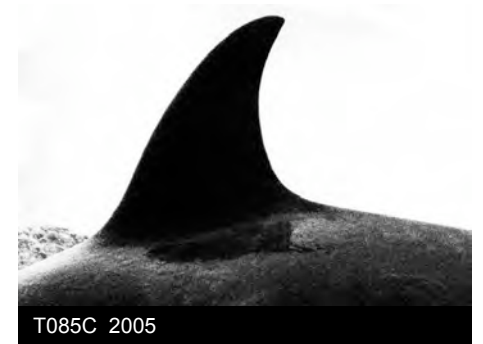
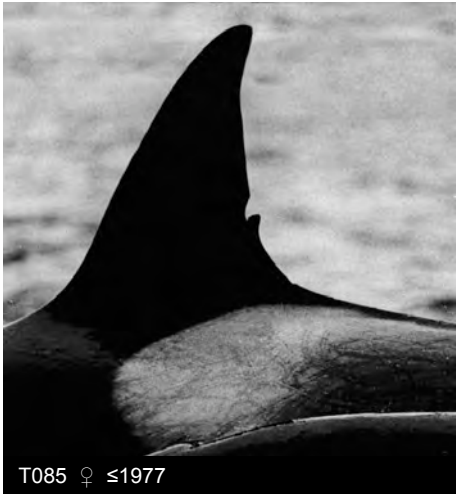
T073A1 2005



T074 ♂ 1979









T087 ♂ ≤1963



T088 ♀ ≤1962



T090 ♀ 1980



T090B 2006



T091 ♀ ≤1974



T092 ♂ ≤1969



T093 ♂ ≤1969



T097 ♂ 1980



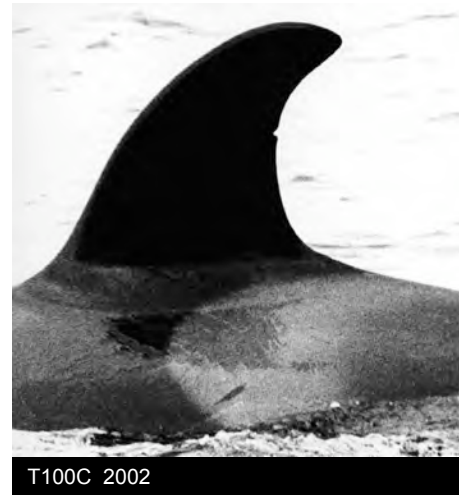
T099 ♀ ≤1984

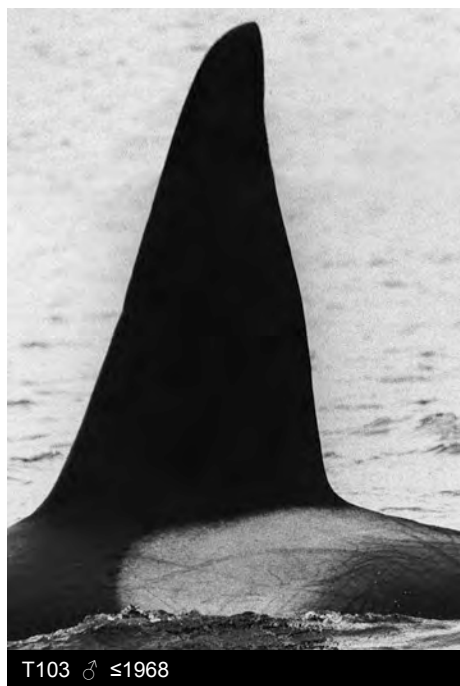


T099A 2003



T099B 2007







T111 ♀ ≤1975



T111A ♀ 1990



T111A1 2006



T111B 2000



T112 ♀ ≤1974



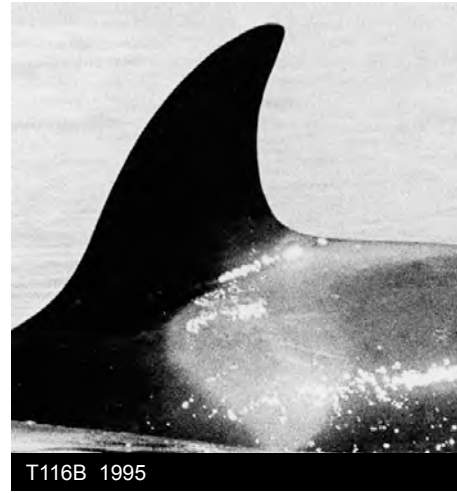
T113 ♂ ≤1975



T114 ♂ ≤1975



T115 ♀ ≤1974



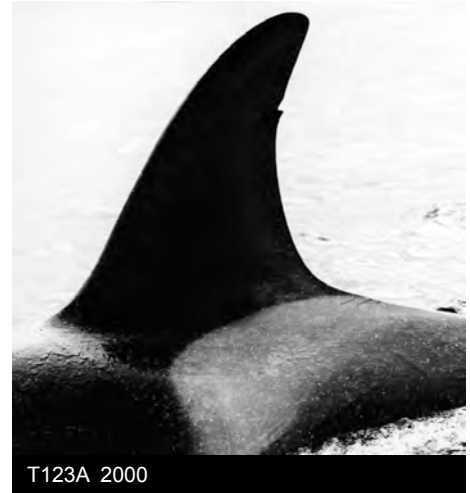




T122 ♀ ≤1982



T123 ♀ ≤1985



T123A 2000



T124 ♀ ≤1967



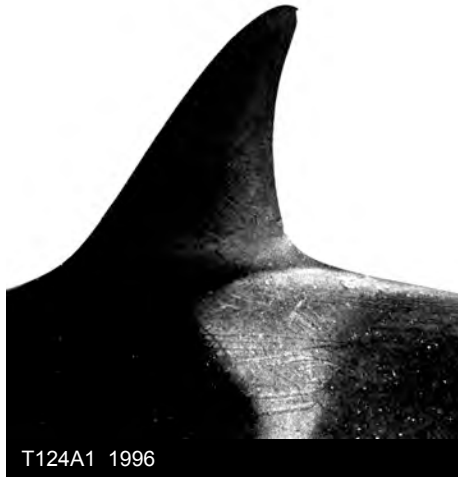
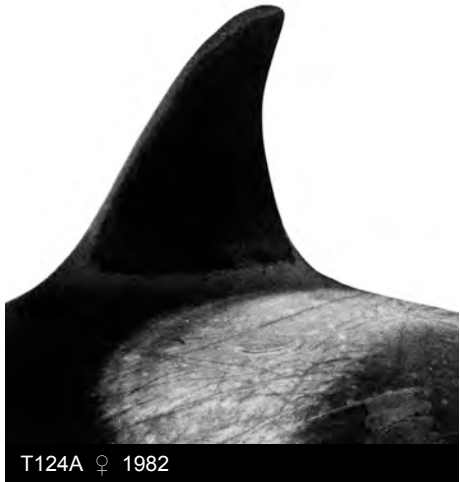
T124C ♀ 1992



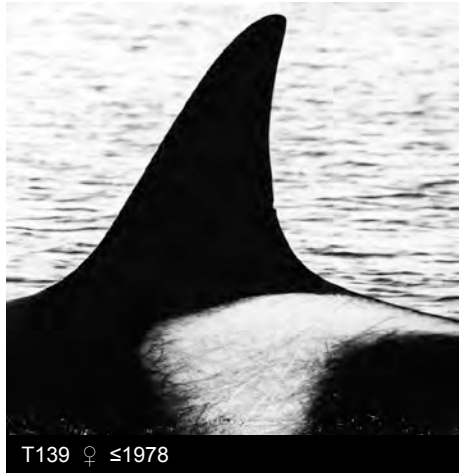
T124D 1996

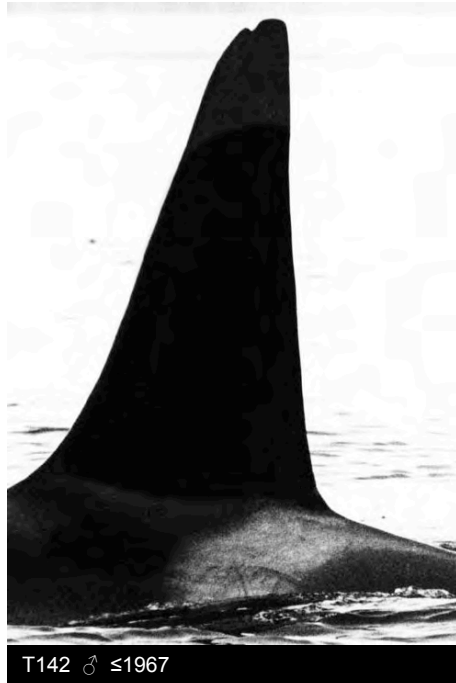


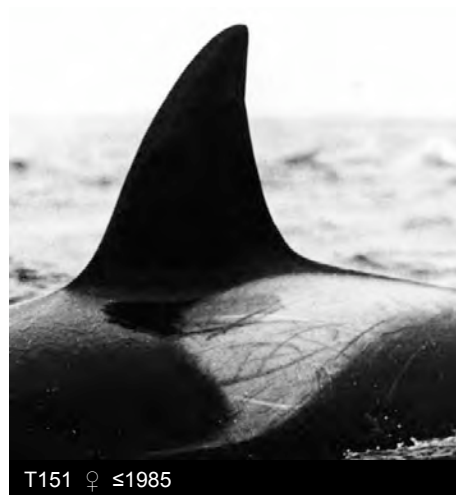
T124E 1999





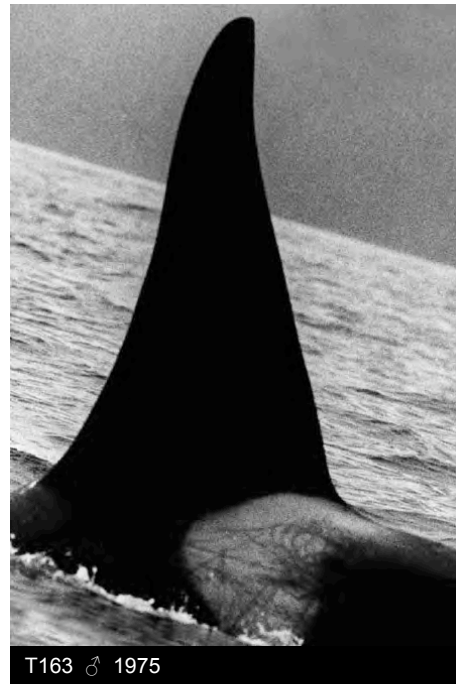








T162 ♂ ≤1971



T163 ♂ 1975



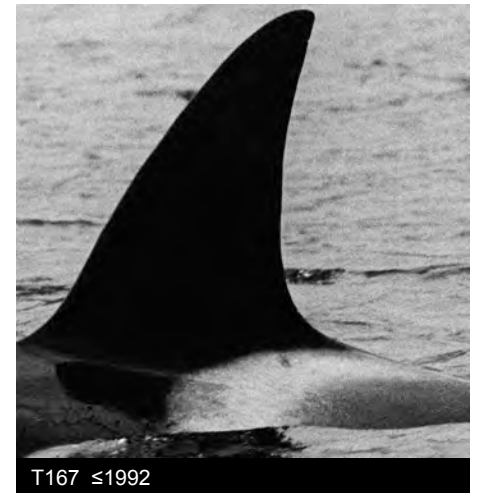
T165 ♂ ≤1975



T166 ♀ ≤1979



T166A 1994



T167 ≤1992



T168A ♀ 1992



T169 ♂ 1978



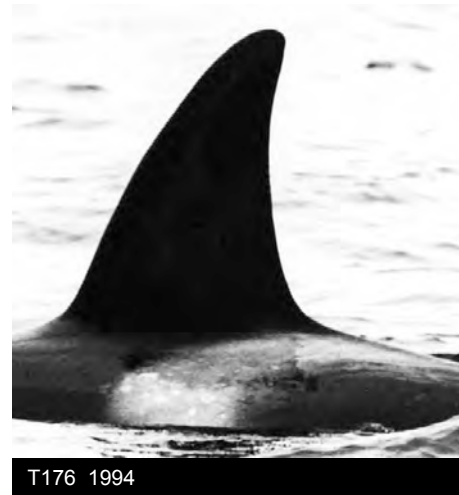
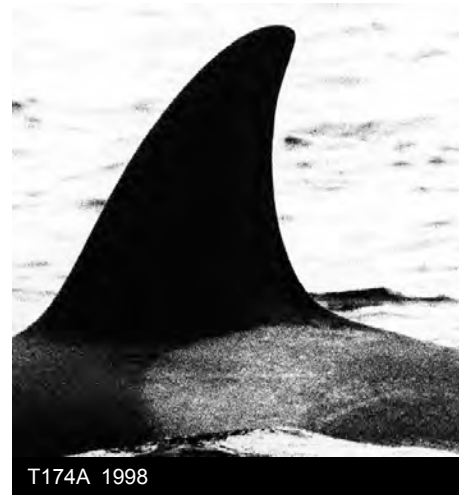
T170 ♂ ≤1973



T171 ♀ ≤1984



T172 1989





T185 ♀ 1983



T186 ♂ 1995



T187 1999

Credits

We wish to thank our colleagues and their affiliations who have contributed photographs of this population over the years making this catalogue possible. Photographers are listed below.

Photographer	Number of Photos
-----	-----
Graeme Ellis	80
Volker Deecke	32
Jared Towers	25
Mark Malleson	23
John Ford	19
Dena Matkin	18
Jim Borrowman	11
Jan Straley	11
Robin Abernethy	5
Brian Gisborne	5
John Calambokidis	3
Jane Watson	3
Janet Neilson	2
Eric Simkin	2
Michael Bigg	1
Rob Butler	1
Mike De Roos	1
Lee Edinshaw	1
John Forde	1
Tracy Hart	1
Kathy Heise	1
Steve Lewis	1
Andrea Rambeau	1

Cover photo by Jared Towers

